

Datasheet for ABIN3031120  
**anti-K-RAS antibody (AA 146-174)**[Go to Product page](#)

## 7 Images

## Overview

Quantity:	0.2 mL
Target:	K-RAS (KRAS)
Binding Specificity:	AA 146-174
Reactivity:	Human, Rat, Mouse
Host:	Rabbit
Clonality:	Polyclonal
Conjugate:	This K-RAS antibody is un-conjugated
Application:	Western Blotting (WB), ELISA, Immunofluorescence (IF), Flow Cytometry (FACS)

## Product Details

Immunogen:	A portion of amino acids 146-174 from the human protein was used as the immunogen for this KRAS antibody.
Isotype:	Ig Fraction
Purification:	Antigen affinity purified

## Target Details

Target:	K-RAS (KRAS)
Alternative Name:	KRAS ( <a href="#">KRAS Products</a> )
Target Type:	Viral Protein
Background:	This gene, a Kirsten ras oncogene homolog from the mammalian ras gene family, encodes a

## Target Details

protein that is a member of the small GTPase superfamily. A single amino acid substitution is responsible for an activating mutation. The transforming protein that results is implicated in various malignancies, including lung adenocarcinoma, mucinous adenoma, ductal carcinoma of the pancreas and colorectal carcinoma. Alternative splicing leads to variants encoding two isoforms that differ in the C-terminal region.

UniProt: [P01116](#)

## Application Details

Application Notes: Titration of the KRAS antibody may be required due to differences in protocols and secondary/substrate sensitivity.\. Western blot: 1:500-2000,Immunofluorescence: 1:10-1:50,Flow Cytometry: 1:10-1:50

Restrictions: For Research Use only

## Handling

Format: Liquid

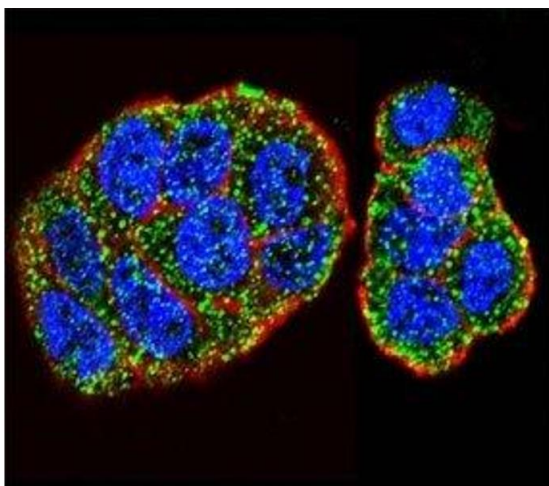
Buffer: In 1X PBS, pH 7.4, with 0.09 % sodium azide

Preservative: Sodium azide

Precaution of Use: This product contains Sodium azide: a POISONOUS AND HAZARDOUS SUBSTANCE which should be handled by trained staff only.

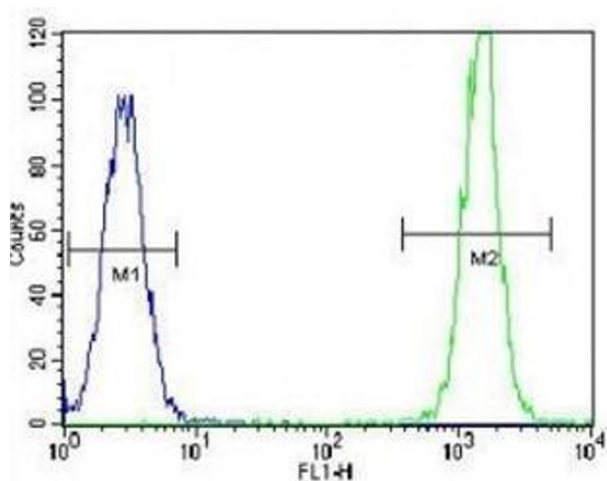
Storage: -20 °C

Storage Comment: Aliquot the KRAS antibody and store frozen at -20°C or colder. Avoid repeated freeze-thaw cycles.



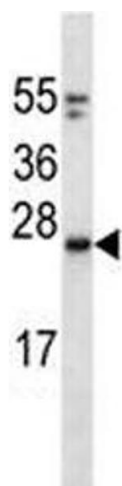
### Immunofluorescence

**Image 1.** Confocal immunofluorescent analysis of KRAS antibody with WiDr cells followed by Alexa Fluor 488-conjugated goat anti-rabbit IgG (green). Actin filaments have been labeled with Alexa Fluor 555 Phalloidin (red). DAPI was used as a nuclear counterstain (blue).



### Flow Cytometry

**Image 2.** KRAS antibody flow cytometric analysis of HeLa cells (right histogram) compared to a negative control (left histogram). FITC-conjugated goat-anti-rabbit secondary Ab was used for the analysis.



### Western Blotting

**Image 3.** KRAS antibody western blot analysis in mouse NIH3T3 lysate. Predicted molecular weight: 20-25 kDa

Please check the [product details page](#) for more images. Overall 7 images are available for ABIN3031120.