

Datasheet for ABIN3031122
anti-p21 antibody (pThr145)

5 Images



[Go to Product page](#)

Overview

Quantity:	0.4 mL
Target:	p21 (CDKN1A)
Binding Specificity:	pThr145
Reactivity:	Human
Host:	Rabbit
Clonality:	Polyclonal
Conjugate:	This p21 antibody is un-conjugated
Application:	Western Blotting (WB), ELISA, Immunohistochemistry (IHC), Dot Blot (DB)

Product Details

Immunogen:	This p-p21 antibody was produced from rabbits immunized with a KLH conjugated synthetic phosphopeptide corresponding to amino acid residues surrounding pT145 of human P21CIP1.
Isotype:	Ig Fraction
Purification:	Antigen affinity purified

Target Details

Target:	p21 (CDKN1A)
Alternative Name:	p21 (CDKN1A Products)
Background:	P21CIP1 is a potent cyclin-dependent kinase inhibitor. This protein binds to and inhibits the activity of cyclin-CDK2 or -CDK4 complexes, and thus functions as a regulator of cell cycle progression at G1. Expression is tightly controlled by the tumor suppressor protein p53, through

Target Details

which this protein mediates the p53-dependent cell cycle G1 phase arrest in response to a variety of stress stimuli. P21CIP1 can interact with proliferating cell nuclear antigen (PCNA), a DNA polymerase accessory factor, and plays a regulatory role in S phase DNA replication and DNA damage repair. This protein has been reported to be specifically cleaved by CASP3-like caspases, which thus leads to a dramatic activation of CDK2, and may be instrumental in the execution of apoptosis following caspase activation.

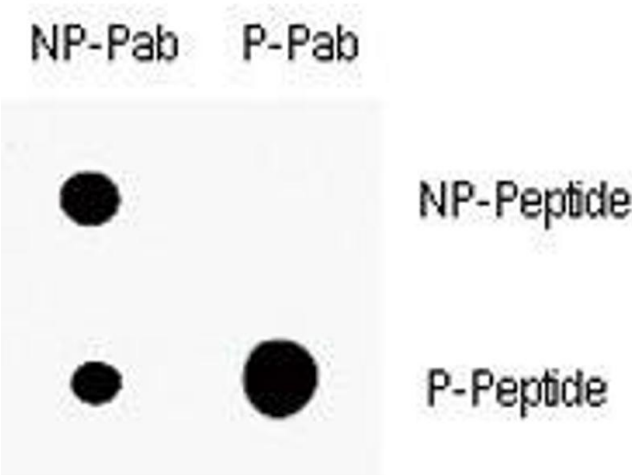
UniProt:	P38936
Pathways:	p53 Signaling , PI3K-Akt Signaling , Cell Division Cycle , AMPK Signaling , Fc-epsilon Receptor Signaling Pathway , EGFR Signaling Pathway , Neurotrophin Signaling Pathway , Mitotic G1-G1/S Phases , DNA Replication , Hepatitis C , Synthesis of DNA , Autophagy

Application Details

Application Notes:	Titration of the p-p21 antibody may be required due to differences in protocols and secondary/substrate sensitivity.\. Western blot: 1:1000, Dot blot: 1:500, IHC (Paraffin): 1:50-1:100
Restrictions:	For Research Use only

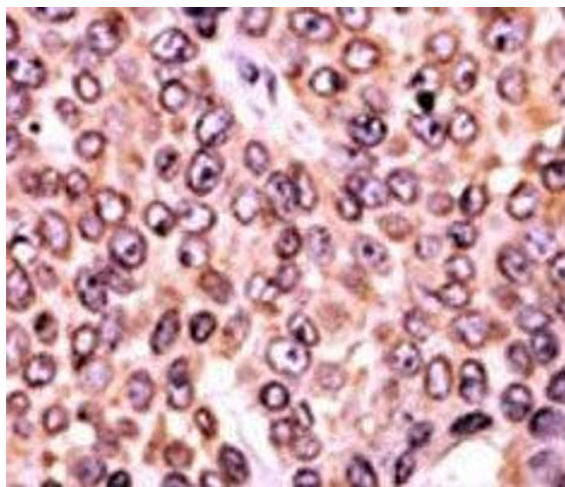
Handling

Format:	Liquid
Buffer:	In 1X PBS pH 7.4 with 0.09 % sodium azide
Preservative:	Sodium azide
Precaution of Use:	This product contains Sodium azide: a POISONOUS AND HAZARDOUS SUBSTANCE which should be handled by trained staff only.
Storage:	-20 °C
Storage Comment:	Aliquot the p-p21 antibody and store frozen at -20°C or colder. Avoid repeated freeze-thaw cycles.



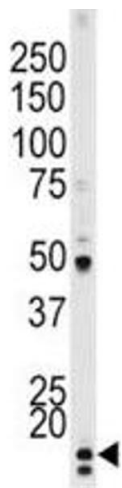
Dot Blot

Image 1. Dot blot analysis of p-p21 antibody. 50ng of phosphopeptide or nonphosphopeptide per dot were spotted.



Immunohistochemistry

Image 2. IHC analysis of FFPE human breast carcinoma tissue stained with the p-p21 antibody.



Western Blotting

Image 3. Western blot testing of p-p21 antibody and HeLa lysate.

Please check the [product details page](#) for more images. Overall 5 images are available for ABIN3031122.