

Datasheet for ABIN3031133  
**anti-GBP1 antibody (AA 566-589)**[Go to Product page](#)

## 2 Images

## Overview

Quantity:	100 µg
Target:	GBP1
Binding Specificity:	AA 566-589
Reactivity:	Human
Host:	Rabbit
Clonality:	Polyclonal
Conjugate:	This GBP1 antibody is un-conjugated
Application:	Western Blotting (WB)

## Product Details

Immunogen:	Amino acids 566-589 (QKESRIMKNEIQDLQTKMRRRKAC-human) were used as the immunogen for this GBP1 antibody.
Isotype:	IgG
Purification:	Antigen affinity

## Target Details

Target:	GBP1
Alternative Name:	GBP1 ( <a href="#">GBP1 Products</a> )
Background:	Interferons induce a large number of genes in their target cells, including those coding for guanylate-binding proteins (GBPs). GBPs, such as GBP1, are characterized by their ability to specifically bind guanine nucleotides (GMP, GDP, and GTP) and are distinguished from the GTP-

## Target Details

binding proteins by the presence of two binding motifs rather than three. The 593-amino acid GBP1 protein shares 77 % and 88 % identity with GBP2 and GBP3, respectively. All GBPs have a conserved N-terminal globular GTP-binding domain containing two consensus sequences and a third T(L/V)RD sequence not found in other GTPases. The GBP1 gene localizes to the GBP gene cluster on chromosome 1p22.2. It is located telomeric to GBP2 and centromeric to GBP3. High expression of GBP1, GBP2, and GBP3 are in endothelial cells after stimulation with IFNG, TNF, or IL1B.

UniProt: [P32455](#)

Pathways: [Cellular Response to Molecule of Bacterial Origin](#)

## Application Details

Application Notes: The stated application concentrations are suggested starting amounts. Titration of the GBP1 antibody may be required due to differences in protocols and secondary/substrate sensitivity.\.  
Western blot: 0.5-1 µg/mL

Restrictions: For Research Use only

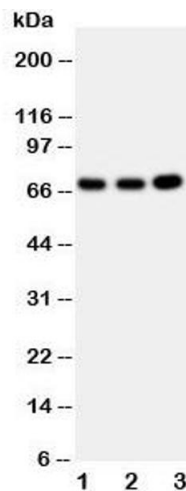
## Handling

Buffer: 0.5 mg/mL if reconstituted with 0.2 mL sterile DI water

Storage: -20 °C

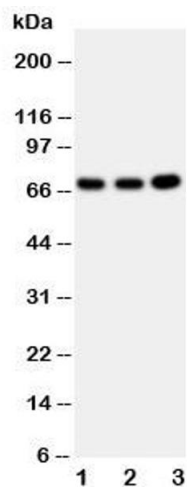
Storage Comment: After reconstitution, the GBP1 antibody can be stored for up to one month at 4°C. For long-term, aliquot and store at -20°C. Avoid repeated freezing and thawing.

## Images



### Western Blotting

**Image 1.** Western blot testing of GBP1 antibody and Lane 1: U87; 2: HeLa; 3: MCF-7 cell lysate



Western Blotting

**Image 2.** Western blot testing of GBP1 antibody and Lane 1: U87