

Datasheet for ABIN3031153

anti-HSP70 1A antibody (AA 574-600)[Go to Product page](#)**3** Images

Overview

Quantity:	0.4 mL
Target:	HSP70 1A (HSPA1A)
Binding Specificity:	AA 574-600
Reactivity:	Human
Host:	Mouse
Clonality:	Monoclonal
Conjugate:	This HSP70 1A antibody is un-conjugated
Application:	Western Blotting (WB), ELISA, Immunofluorescence (IF)

Product Details

Immunogen:	A portion of amino acids 574-600 from the human protein was used as the immunogen for this HSPA1A antibody.
Clone:	201CT8-2-3
Isotype:	IgG1 kappa
Cross-Reactivity (Details):	Expected species reactivity: Bovine, Pig
Purification:	Purified

Target Details

Target:	HSP70 1A (HSPA1A)
Alternative Name:	HSPA1A (HSPA1A Products)

Target Details

Background: This intronless gene encodes a 70 kDa heat shock protein which is a member of the heat shock protein 70 family. In conjunction with other heat shock proteins, this protein stabilizes existing proteins against aggregation and mediates the folding of newly translated proteins in the cytosol and in organelles. It is also involved in the ubiquitin-proteasome pathway through interaction with the AU-rich element RNA-binding protein 1. The gene is located in the major histocompatibility complex class III region, in a cluster with two closely related genes which encode similar proteins.

UniProt: [P08107](#)

Pathways: [Regulation of Leukocyte Mediated Immunity](#), [Positive Regulation of Immune Effector Process](#)

Application Details

Application Notes: Titration of the HSPA1A antibody may be required due to differences in protocols and secondary/substrate sensitivity.\. Western blot: 1:100-1:2000,Immunofluorescence: 1:10-1:50

Restrictions: For Research Use only

Handling

Format: Liquid

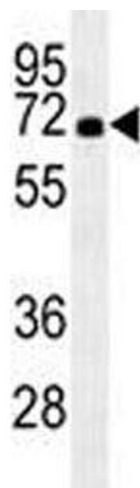
Buffer: In 1X PBS pH 7.4 with 0.09 % sodium azide

Preservative: Sodium azide

Precaution of Use: This product contains Sodium azide: a POISONOUS AND HAZARDOUS SUBSTANCE which should be handled by trained staff only.

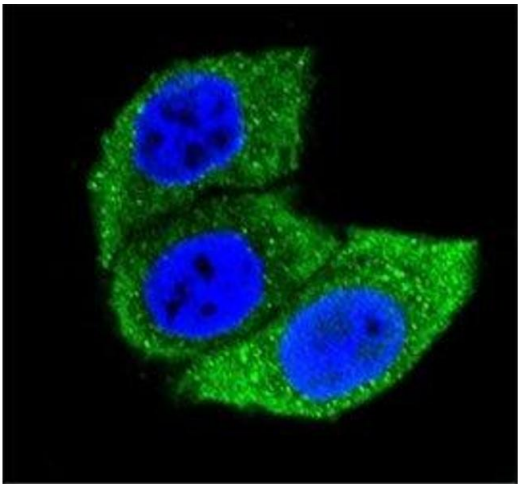
Storage: -20 °C

Storage Comment: Aliquot the HSPA1A antibody and store frozen at -20°C or colder. Avoid repeated freeze-thaw cycles.



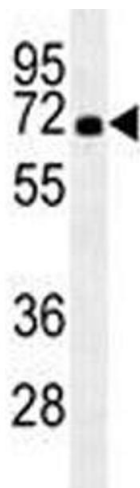
Western Blotting

Image 1. HSPA1A antibody western blot analysis in HL-60 lysate.



Immunofluorescence

Image 2. Confocal immunofluorescent analysis of HSPA1A antibody with HeLa cells followed by Alexa Fluor 488-conjugated goat anti-mouse IgG (green). DAPI was used as a nuclear counterstain (blue).



Western Blotting

Image 3. HSPA1A antibody western blot analysis in HL-60 lysate.