

Datasheet for ABIN3031182
anti-HAVCR1 antibody (AA 289-307)



[Go to Product page](#)

3 Images

Overview

Quantity:	100 µg
Target:	HAVCR1
Binding Specificity:	AA 289-307
Reactivity:	Human, Rat
Host:	Rabbit
Clonality:	Polyclonal
Conjugate:	This HAVCR1 antibody is un-conjugated
Application:	Western Blotting (WB), Immunohistochemistry (Paraffin-embedded Sections) (IHC (p)), Immunohistochemistry (Frozen Sections) (IHC (fro))

Product Details

Immunogen:	Amino acids 289-307 (HPRAEDNIYIIEDSRGAE-rat) were used as the immunogen for this TIM-1 antibody.
Isotype:	IgG
Purification:	Antigen affinity

Target Details

Target:	HAVCR1
Alternative Name:	TIM-1 (KIM-1) (HAVCR1 Products)
Target Type:	Virus

Target Details

Background: T-cell immunoglobulin and mucin domain-containing protein 1 (TIM-1) or Kidney injury molecule 1 (KIM-1), also known as HAVCR1 and HAVCR, is a protein that in humans is encoded by the KIM1 gene. Biochemical, mutational, and cell adhesion analyses confirm that TIM-1 is capable of homophilic interactions. The features identified in murine TIM1 is conserved in human protein. The protein is a receptor for virus through the infection of canine osteogenic sarcoma cells expressing HAVCR1 with HAV. Using a monoclonal antibody to mouse TIM-1, expression was seen after activation of naive T cells and on T cells differentiated in Th2-polarizing conditions. Ectopic expression during mouse T-cell differentiation leads to production of the Th2-type cytokine IL4, but not the Th1-type cytokine Ifng.

UniProt: [O54947](#)

Application Details

Application Notes: Titration of the TIM-1 antibody may be required due to differences in protocols and secondary/substrate sensitivity.\. Western blot: 0.5-1 µg/mL,IHC (Paraffin): 0.5-1 µg/mL,IHC (Frozen): 0.5-1 µg/mL

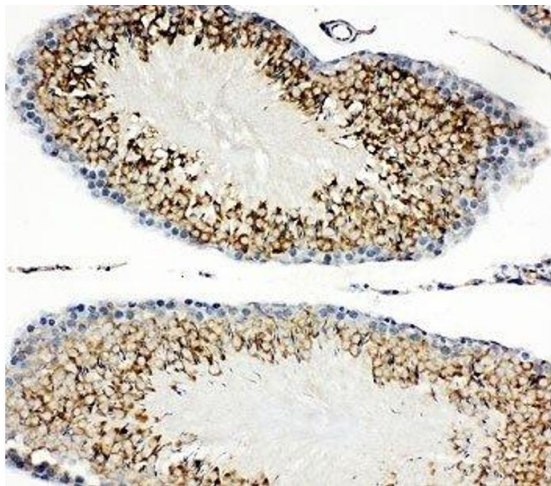
Restrictions: For Research Use only

Handling

Buffer: 0.5 mg/mL if reconstituted with 0.2 mL sterile DI water

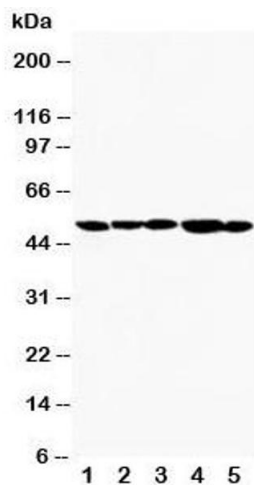
Storage: -20 °C

Storage Comment: The lyophilized TIM-1 antibody can be stored at 4°C to -20°C. After reconstitution, aliquot and store at -20°C. Avoid repeated freezing and thawing.



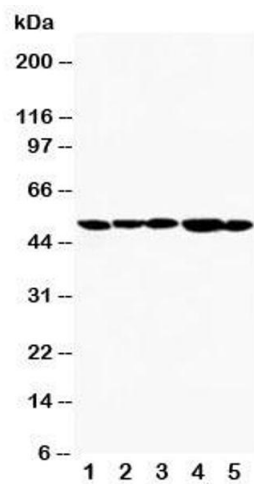
Immunohistochemistry

Image 1. IHC-P: TIM-1 antibody testing of rat testis tissue



Western Blotting

Image 2. Western blot testing of TIM-1 antibody and Lane 1: SMMC-7721; 2: HeLa; 3: PANC; 4: MM231; 5: MM453. Observed size: 40~50KD



Western Blotting

Image 3. Western blot testing of TIM-1 antibody and Lane 1: SMMC-7721