



[Go to Product page](#)

Datasheet for ABIN3031186  
**anti-HGF antibody (AA 521-554)**

5 Images

### Overview

Quantity:	0.4 mL
Target:	HGF
Binding Specificity:	AA 521-554
Reactivity:	Human
Host:	Rabbit
Clonality:	Polyclonal
Conjugate:	This HGF antibody is un-conjugated
Application:	Western Blotting (WB), Immunohistochemistry (IHC), ELISA, Flow Cytometry (FACS)

### Product Details

Immunogen:	A portion of amino acids 521-554 from the human protein was used as the immunogen for this HGF antibody.
Isotype:	Ig Fraction
Purification:	Purified

### Target Details

Target:	HGF
Alternative Name:	HGF ( <a href="#">HGF Products</a> )
Background:	Hepatocyte Growth Factor is a potent mitogen for mature parenchymal hepatocyte cells, seems to be a hepatotropic factor, and acts as a growth factor for a broad spectrum of tissues and cell types. Activating ligand for the receptor tyrosine kinase MET by binding to it

## Target Details

and promoting its dimerization. [UniProt]

UniProt: [P14210](#)

Pathways: [RTK Signaling](#), [Carbohydrate Homeostasis](#), [Glycosaminoglycan Metabolic Process](#), [Synaptic Membrane](#), [Signaling of Hepatocyte Growth Factor Receptor](#)

## Application Details

Application Notes: Titration of the HGF antibody may be required due to differences in protocols and secondary/substrate sensitivity. Western blot: 1:1000, Flow Cytometry: 1:10-1:50, IHC (Paraffin): 1:50-1:100

Restrictions: For Research Use only

## Handling

Format: Liquid

Buffer: In 1X PBS, pH 7.4, with 0.09 % sodium azide

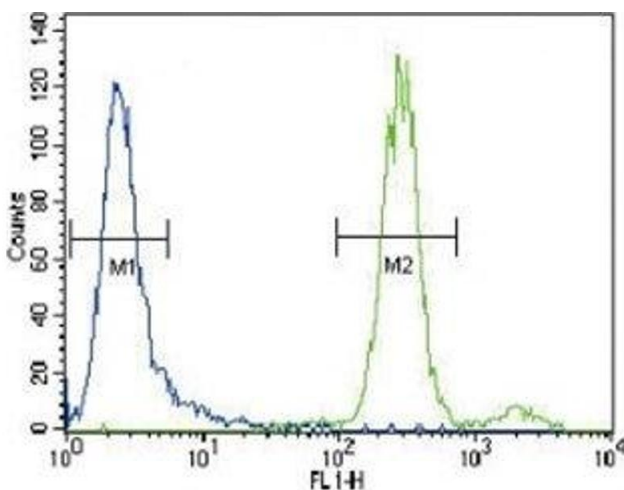
Preservative: Sodium azide

Precaution of Use: This product contains Sodium azide: a POISONOUS AND HAZARDOUS SUBSTANCE which should be handled by trained staff only.

Storage: -20 °C

Storage Comment: Aliquot the HGF antibody and store frozen at -20°C or colder. Avoid repeated freeze-thaw cycles.

## Images



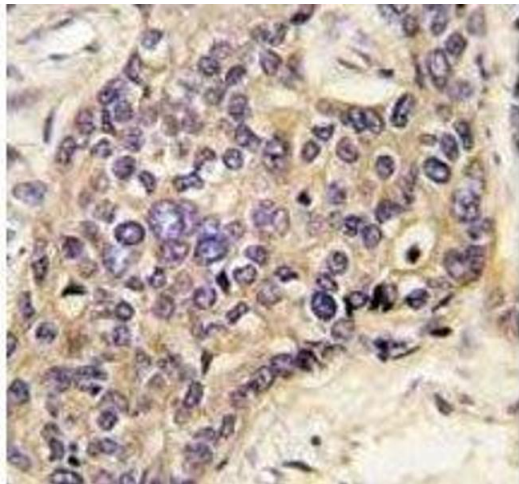
### Flow Cytometry

**Image 1.** HGF antibody flow cytometric analysis of CEM cells (green) compared to a negative control (blue). FITC-conjugated goat-anti-rabbit secondary Ab was used for the analysis.



### Western Blotting

**Image 2.** HGF antibody used in western blot to detect HGF in Ramos lysate. Predicted molecular weight: 76-91 kDa (precursor), 54-64 kDa (alpha chain), 31-34 kDa (beta chain).



### Immunohistochemistry

**Image 3.** IHC analysis of FFPE human hepatocarcinoma tissue stained with HGF antibody

Please check the [product details page](#) for more images. Overall 5 images are available for ABIN3031186.