



[Go to Product page](#)

Datasheet for ABIN3031191
anti-Hepsin antibody (C-Term)

2 Images

Overview

Quantity:	100 µg
Target:	Hepsin (HPN)
Binding Specificity:	C-Term
Reactivity:	Human, Rat
Host:	Rabbit
Clonality:	Polyclonal
Conjugate:	This Hepsin antibody is un-conjugated
Application:	Western Blotting (WB)

Product Details

Immunogen:	An amino acid sequence from the C-terminus of human Hepsin (KVSDFREWIFQAIKTHSEA) was used as the immunogen for this Hepsin antibody.
Isotype:	IgG
Purification:	Antigen affinity

Target Details

Target:	Hepsin (HPN)
Alternative Name:	Hepsin (HPN Products)
Background:	Hepsin, also known as TMPRSS1, is an enzyme that in humans is encoded by the HPN gene. Tsuji et al.(1991) mapped the gene to 19q11-q13.2. Using cDNA microarrays, Dhanasekaran et al.(2001) examined gene expression profiles of more than 50 normal and neoplastic prostate

Target Details

specimens and 3 common prostate cancer cell lines. Signature expression profiles of normal adjacent prostate, benign prostatic hypertrophy, localized prostate cancer, and metastatic, hormone-refractory prostate cancer were determined. In 3 different human cell lines, Guipponi et al.(2008) found that Hepsin was stably anchored in the endoplasmic reticulum.

UniProt: [P05981](#)

Pathways: [Regulation of Hormone Metabolic Process](#), [Sensory Perception of Sound](#)

Application Details

Application Notes: The stated application concentrations are suggested starting amounts. Titration of the Hepsin antibody may be required due to differences in protocols and secondary/substrate sensitivity.\.
Western blot: 0.5-1 µg/mL

Restrictions: For Research Use only

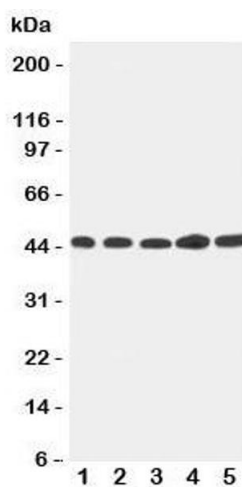
Handling

Buffer: 0.5 mg/mL if reconstituted with 0.2 mL sterile DI water

Storage: -20 °C

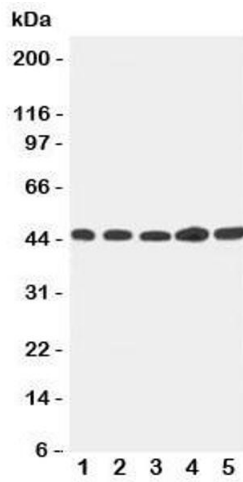
Storage Comment: After reconstitution, the Hepsin antibody can be stored for up to one month at 4°C. For long-term, aliquot and store at -20°C. Avoid repeated freezing and thawing.

Images



Western Blotting

Image 1. Western blot testing of Hepsin antibody and Lane 1: 293T; 2: NRK; 3: HeLa; 4: PANC; 5: MFC-7 cell lysate. Expected/observed size ~45KD



Western Blotting

Image 2. Western blot testing of Hepsin antibody and Lane 1: 293T