

Datasheet for ABIN3031200
anti-HMGA1 antibody (AA 64-93)

5 Images

[Go to Product page](#)

Overview

Quantity:	0.4 mL
Target:	HMGA1
Binding Specificity:	AA 64-93
Reactivity:	Human
Host:	Rabbit
Clonality:	Polyclonal
Application:	Western Blotting (WB), ELISA, Immunofluorescence (IF), Flow Cytometry (FACS)

Product Details

Immunogen:	A portion of amino acids 64-93 from the human protein was used as the immunogen for this HMGA1 antibody.
Isotype:	Ig Fraction
Cross-Reactivity (Details):	Expected species reactivity: Mouse, Rat, Hamster
Purification:	Purified

Target Details

Target:	HMGA1
Alternative Name:	HMGA1 (HMGA1 Products)
Background:	HMGA1 encodes a non-histone protein involved in many cellular processes, including regulation of inducible gene transcription, integration of retroviruses into chromosomes, and the metastatic progression of cancer cells. The encoded protein preferentially binds to the minor

Target Details

groove of A+T-rich regions in double-stranded DNA. It has little secondary structure in solution but assumes distinct conformations when bound to substrates such as DNA or other proteins. The encoded protein is frequently acetylated and is found in the nucleus.

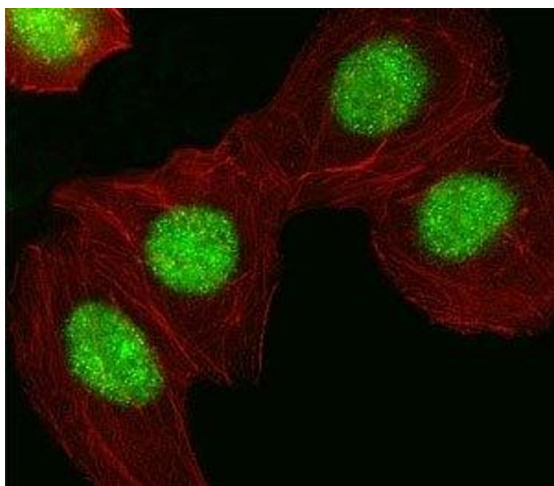
UniProt:	P17096
Pathways:	Nuclear Hormone Receptor Binding, Autophagy

Application Details

Application Notes:	Titration of the HMGA1 antibody may be required due to differences in protocols and secondary/substrate sensitivity.\. Immunofluorescence: 1:10-1:50,Western blot: 1:1000,Flow Cytometry: 1:10-1:50
Restrictions:	For Research Use only

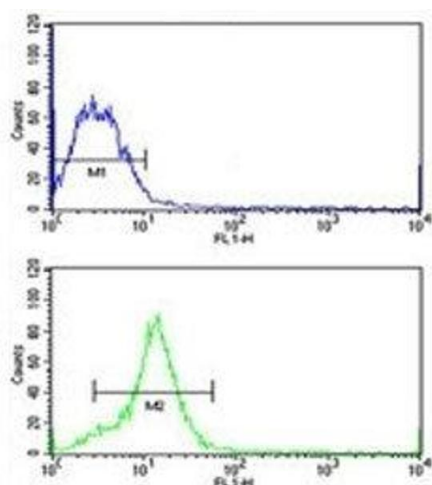
Handling

Format:	Liquid
Buffer:	In 1X PBS, pH 7.4, with 0.09 % sodium azide
Preservative:	Sodium azide
Precaution of Use:	This product contains Sodium azide: a POISONOUS AND HAZARDOUS SUBSTANCE which should be handled by trained staff only.
Storage:	-20 °C
Storage Comment:	Aliquot the HMGA1 antibody and store frozen at -20°C or colder. Avoid repeated freeze-thaw cycles.



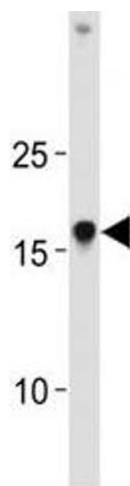
Immunofluorescence

Image 1. Fluorescent image of A549 cell stained with HMGA1 antibody at 1:25. HMGA1 immunoreactivity is localized to the nucleus.



Flow Cytometry

Image 2. HMGA1 antibody flow cytometric analysis of MCF-7 cells (green) compared to a negative control (blue). FITC-conjugated goat-anti-rabbit secondary Ab was used for the analysis.



Western Blotting

Image 3. HMGA1 antibody western blot analysis in K562 lysate

Please check the [product details page](#) for more images. Overall 5 images are available for ABIN3031200.