

Datasheet for ABIN3031212

anti-Histone Cluster 3, H3 (HIST3H3) (AA 1-30) antibody[Go to Product page](#)**2** Images

Overview

Quantity:	0.4 mL
Target:	Histone Cluster 3, H3 (HIST3H3)
Binding Specificity:	AA 1-30
Reactivity:	Human
Host:	Rabbit
Clonality:	Polyclonal
Conjugate:	Un-conjugated
Application:	ELISA, Western Blotting (WB)

Product Details

Immunogen:	A portion of amino acids 1-30 from human HISTH3H was used as the immunogen for this HIST3H3 antibody.
Isotype:	Ig Fraction
Cross-Reactivity (Details):	Expected species reactivity: Mouse, Rat, Bovine, Pig, Chicken, Zebrafish, Xenopus, Drosophila, C. elegans
Purification:	Antigen affinity purified

Target Details

Target:	Histone Cluster 3, H3 (HIST3H3)
Alternative Name:	HIST3H3 (Histone H3.1t) (HIST3H3 Products)

Target Details

Background: Histones are basic nuclear proteins that are responsible for the nucleosome structure of the chromosomal fiber in eukaryotes. Nucleosomes consist of approximately 146 bp of DNA wrapped around a histone octamer composed of pairs of each of the four core histones (H2A, H2B, H3, and H4). The chromatin fiber is further compacted through the interaction of a linker histone, H1, with the DNA between the nucleosomes to form higher order chromatin structures. This gene is intronless and encodes a member of the histone H3 family. Transcripts from this gene lack polyA tails, instead, they contain a palindromic termination element.

UniProt: [Q16695](#)

Application Details

Application Notes: Titration of the Histone HIST3H3 antibody may be required due to differences in protocols and secondary/substrate sensitivity.\. Western blot: 1:1000

Restrictions: For Research Use only

Handling

Format: Liquid

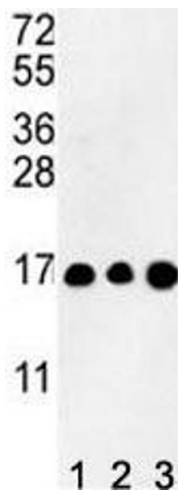
Buffer: In 1X PBS pH 7.4 with 0.09 % sodium azide

Preservative: Sodium azide

Precaution of Use: This product contains Sodium azide: a POISONOUS AND HAZARDOUS SUBSTANCE which should be handled by trained staff only.

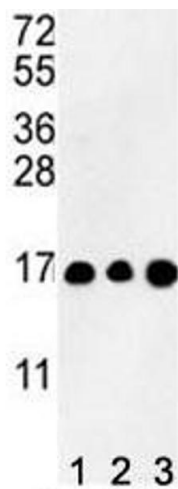
Storage: -20 °C

Storage Comment: Aliquot the Histone HIST3H3 antibody and store frozen at -20°C or colder. Avoid repeated freeze-thaw cycles.



Western Blotting

Image 1. Western blot analysis of HIST3H3 antibody and (1) CEM, (2) K562, and (3) HL-60 lysate



Western Blotting

Image 2. Western blot analysis of HIST3H3 antibody and (1) CEM, (2) K562, and (3) HL-60 lysate