

Datasheet for ABIN3031240  
**anti-HLAG antibody (AA 62-89)**

## 8 Images

[Go to Product page](#)

## Overview

|                      |   |
|----------------------|---|
| Quantity:            | 0.4 mL  |
| Target:              | HLAG  |
| Binding Specificity: | AA 62-89  |
| Reactivity:          | Human   |
| Host:                | Rabbit  |
| Clonality:           | Polyclonal  |
| Conjugate:           | This HLAG antibody is un-conjugated   |
| Application:         | Western Blotting (WB), ELISA, Flow Cytometry (FACS), Immunohistochemistry (IHC) |

## Product Details

|               |  |
|---------------|--|
| Immunogen:    | A portion of amino acids 62-89 from the human protein was used as the immunogen for this HLA-G antibody. |
| Isotype:      | Ig Fraction  |
| Purification: | Antigen affinity purified  |

## Target Details

|                   |   |
|-------------------|---|
| Target:           | HLAG  |
| Alternative Name: | HLA-G ( <a href="#">HLAG Products</a> )   |
| Background:       | HLA-G belongs to the HLA class I heavy chain paralogues. This class I molecule is a heterodimer consisting of a heavy chain and a light chain (beta-2 microglobulin). The heavy chain is anchored in the membrane. HLA-G is expressed on fetal derived placental cells. The |

## Target Details

heavy chain is approximately 45 kDa and its gene contains 8 exons. Exon one encodes the leader peptide, exons 2 and 3 encode the alpha1 and alpha2 domain, which both bind the peptide, exon 4 encodes the alpha3 domain, exon 5 encodes the transmembrane region, and exon 6 encodes the cytoplasmic tail.

UniProt: [P17693](#)

Pathways: [Regulation of Leukocyte Mediated Immunity](#), [Positive Regulation of Immune Effector Process](#), [Cancer Immune Checkpoints](#), [Human Leukocyte Antigen \(HLA\) in Adaptive Immune Response](#)

## Application Details

Application Notes: Titration of the HLA-G antibody may be required due to differences in protocols and secondary/substrate sensitivity.\. Western blot: 1:1000,IHC (Paraffin): 1:10-1:50,Flow Cytometry: 1:10-1:50

Restrictions: For Research Use only

## Handling

Format: Liquid

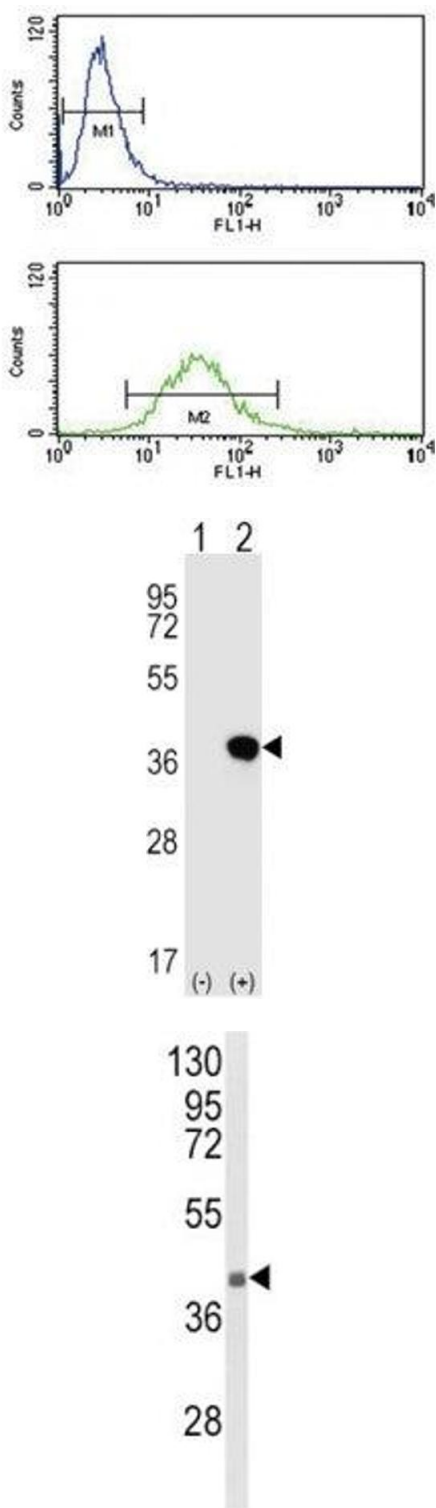
Buffer: In 1X PBS, pH 7.4, with 0.09 % sodium azide

Preservative: Sodium azide

Precaution of Use: This product contains Sodium azide: a POISONOUS AND HAZARDOUS SUBSTANCE which should be handled by trained staff only.

Storage: -20 °C

Storage Comment: Aliquot the HLA-G antibody and store frozen at -20°C or colder. Avoid repeated freeze-thaw cycles.



### Flow Cytometry

**Image 1.** HLA-G antibody flow cytometry analysis of NCI-H460 cells (bottom histogram)

### Western Blotting

**Image 2.** Western blot analysis of HLA-G antibody and 293 cell lysate either nontransfected (Lane 1) or transiently transfected (2) with the HLA-G gene.

### Western Blotting

**Image 3.** Western blot analysis of HLA-G antibody and NCI-H460 lysate. Predicted molecular weight ~40 kDa.

Please check the [product details page](#) for more images. Overall 8 images are available for ABIN3031240.