

Datasheet for ABIN3031264
anti-HYAL2 antibody (AA 142-157)[Go to Product page](#)

2 Images

Overview

Quantity:	100 µg
Target:	HYAL2
Binding Specificity:	AA 142-157
Reactivity:	Human, Mouse, Rat
Host:	Rabbit
Clonality:	Polyclonal
Conjugate:	This HYAL2 antibody is un-conjugated
Application:	Western Blotting (WB)

Product Details

Immunogen:	Amino acids 142-157 (VRNWQDKDVYRRLSRQ-human) were used as the immunogen for this HYAL2 antibody.
Isotype:	IgG
Purification:	Antigen affinity

Target Details

Target:	HYAL2
Alternative Name:	HYAL2 (HYAL2 Products)
Background:	Hyaluronoglucosaminidase 2, also known as hyaluronidase 2, and LuCa-2, is an enzyme that in humans is encoded by the HYAL2 gene. HYAL2 cDNAs encode a preprotein with an N-terminal signal peptide. Northern blot analysis indicated that the gene was expressed in all human

Target Details

tissues tested except adult brain, and Western blot analysis detected the protein in all mouse tissues examined except adult brain. HYAL2 is a glycosylphosphatidylinositol (GPI)-anchored protein on the cell surface and serves as a receptor for entry into the cell of the jaagsiekte sheep retrovirus (JSRV). The findings of Rai et al.(2001) that HYAL2 is a GPI-anchored protein on the cell surface showed that GFP would likely be cleaved from HYAL2 during GPI addition, leaving HYAL2 on the cell surface and resulting in GFP transit to the lysosome for degradation.

UniProt: [Q12891](#)

Pathways: [Transition Metal Ion Homeostasis](#), [Glycosaminoglycan Metabolic Process](#)

Application Details

Application Notes: The stated application concentrations are suggested starting amounts. Titration of the HYAL2 antibody may be required due to differences in protocols and secondary/substrate sensitivity.\. Western blot: 0.5-1 µg/mL

Restrictions: For Research Use only

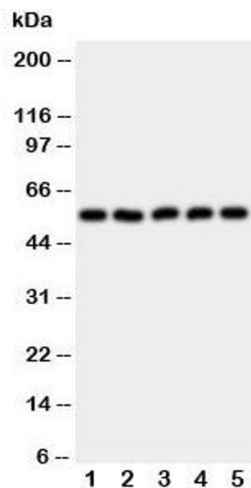
Handling

Buffer: 0.5 mg/mL if reconstituted with 0.2 mL sterile DI water

Storage: -20 °C

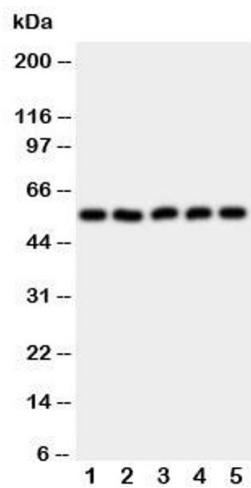
Storage Comment: After reconstitution, the HYAL2 antibody can be stored for up to one month at 4°C. For long-term, aliquot and store at -20°C. Avoid repeated freezing and thawing.

Images



Western Blotting

Image 1. Western blot testing of HYAL2 antibody and Lane 1: HeLa; 2: SMMC-7721; 3: COLO320; 4: MCF-7; 5: HT1080 cell lysate



Western Blotting

Image 2. Western blot testing of HYAL2 antibody and Lane 1: HeLa