



[Go to Product page](#)

Datasheet for ABIN3031282  
**anti-HIF1A antibody (AA 728-757)**

6 Images

Overview

Quantity:	0.4 mL
Target:	HIF1A
Binding Specificity:	AA 728-757
Reactivity:	Human, Mouse
Host:	Rabbit
Clonality:	Polyclonal
Conjugate:	This HIF1A antibody is un-conjugated
Application:	Western Blotting (WB), Immunohistochemistry (IHC), ELISA, Immunofluorescence (IF)

Product Details

Immunogen:	A portion of amino acids 728-757 from the human protein was used as the immunogen for this HIF-1 alpha antibody.
Isotype:	Ig Fraction
Purification:	Purified

Target Details

Target:	HIF1A
Alternative Name:	HIF-1 alpha ( <a href="#">HIF1A Products</a> )
Background:	Hypoxia-inducible factor-1 (HIF1) is a transcription factor found in mammalian cells cultured under reduced oxygen tension that plays an essential role in cellular and systemic homeostatic responses to hypoxia. HIF1 is a heterodimer composed of an alpha subunit and a beta subunit.

## Target Details

---

The beta subunit has been identified as the aryl hydrocarbon receptor nuclear translocator (ARNT).

UniProt: [Q16665](#)

Pathways: [Positive Regulation of Peptide Hormone Secretion](#), [Regulation of Hormone Metabolic Process](#), [Regulation of Hormone Biosynthetic Process](#), [Cellular Response to Molecule of Bacterial Origin](#), [Carbohydrate Homeostasis](#), [Transition Metal Ion Homeostasis](#), [Tube Formation](#), [Regulation of Carbohydrate Metabolic Process](#), [Signaling Events mediated by VEGFR1 and VEGFR2](#), [VEGFR1 Specific Signals](#), [Warburg Effect](#)

## Application Details

---

Application Notes: Titration of the HIF-1 alpha antibody may be required due to differences in protocols and secondary/substrate sensitivity.\. Western blot: 1:1000,Immunofluorescence: 1:10-1:50,IHC (Paraffin): 1:10-1:50

Restrictions: For Research Use only

## Handling

---

Format: Liquid

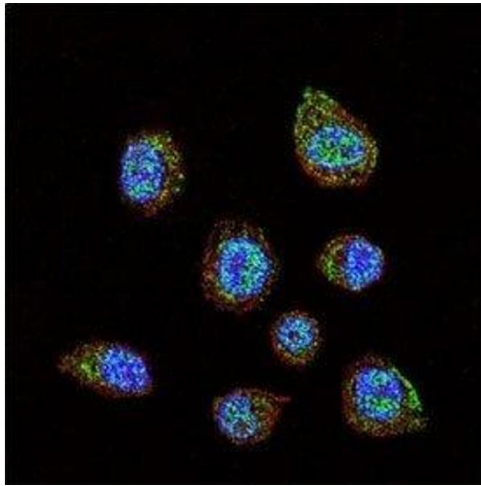
Buffer: In 1X PBS pH 7.4 with 0.09 % sodium azide

Preservative: Sodium azide

Precaution of Use: This product contains Sodium azide: a POISONOUS AND HAZARDOUS SUBSTANCE which should be handled by trained staff only.

Storage: -20 °C

Storage Comment: Aliquot the HIF-1 alpha antibody and store frozen at -20°C or colder. Avoid repeated freeze-thaw cycles.



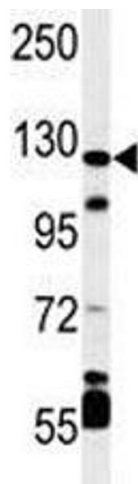
### Immunofluorescence

**Image 1.** Confocal immunofluorescent analysis of HIF-1 alpha antibody with MDA-MB231 cells followed by Alexa Fluor 488-conjugated goat anti-rabbit IgG (green). Actin filaments have been labeled with Alexa Fluor 555 Phalloidin (red). DAPI was used as a nuclear count



### Western Blotting

**Image 2.** Western blot analysis of HIF-1 alpha antibody and MDA-MB231 lysate



### Western Blotting

**Image 3.** Western blot analysis of HIF-1 alpha antibody and mouse cerebellum tissue lysate

Please check the [product details page](#) for more images. Overall 6 images are available for ABIN3031282.