

Datasheet for ABIN3031283
anti-HIF1A antibody (AA 1-30)

5 Images



[Go to Product page](#)

Overview

Quantity:	0.4 mL
Target:	HIF1A
Binding Specificity:	AA 1-30
Reactivity:	Human, Hamster
Host:	Rabbit
Clonality:	Polyclonal
Conjugate:	This HIF1A antibody is un-conjugated
Application:	Western Blotting (WB), Immunohistochemistry (IHC), ELISA, Immunofluorescence (IF)

Product Details

Immunogen:	A portion of amino acids 1-30 from the human protein was used as the immunogen for this HIF1 alpha antibody.
Isotype:	Ig Fraction
Cross-Reactivity (Details):	Expected species reactivity: Bovine
Purification:	Purified

Target Details

Target:	HIF1A
Alternative Name:	HIF1 alpha (HIF1A Products)
Background:	Hypoxia-inducible factor-1 (HIF1) is a transcription factor found in mammalian cells cultured

Target Details

under reduced oxygen tension that plays an essential role in cellular and systemic homeostatic responses to hypoxia. HIF1 is a heterodimer composed of an alpha subunit and a beta subunit. The beta subunit has been identified as the aryl hydrocarbon receptor nuclear translocator (ARNT). This protein encodes the alpha subunit of HIF-1. Overexpression of a natural antisense transcript (aHIF) of this gene has been shown to be associated with nonpapillary renal carcinomas.

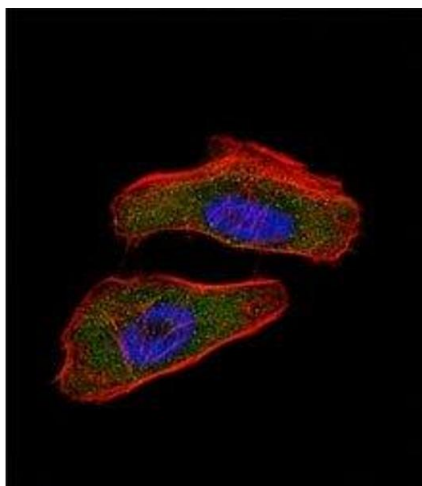
UniProt:	Q16665
Pathways:	Positive Regulation of Peptide Hormone Secretion , Regulation of Hormone Metabolic Process , Regulation of Hormone Biosynthetic Process , Cellular Response to Molecule of Bacterial Origin , Carbohydrate Homeostasis , Transition Metal Ion Homeostasis , Tube Formation , Regulation of Carbohydrate Metabolic Process , Signaling Events mediated by VEGFR1 and VEGFR2 , VEGFR1 Specific Signals , Warburg Effect

Application Details

Application Notes:	Titration of the HIF-1 alpha antibody may be required due to differences in protocols and secondary/substrate sensitivity.\. Western blot: 1:1000,IHC (Paraffin): 1:10-1:50,Immunofluorescence: 1:10-1:50
Restrictions:	For Research Use only

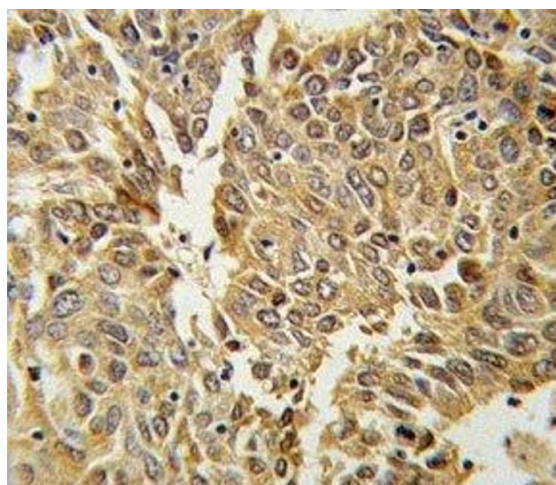
Handling

Format:	Liquid
Buffer:	In 1X PBS pH 7.4 with 0.09 % sodium azide
Preservative:	Sodium azide
Precaution of Use:	This product contains Sodium azide: a POISONOUS AND HAZARDOUS SUBSTANCE which should be handled by trained staff only.
Storage:	-20 °C
Storage Comment:	Aliquot the HIF1 alpha antibody and store frozen at -20°C or colder. Avoid repeated freeze-thaw cycles.



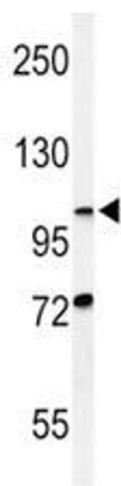
Immunofluorescence

Image 1. Fluorescent confocal image of HeLa cell stained with HIF1 alpha antibody at 1:25. HIF1A immunoreactivity is localized to the cytoplasm and nucleus.



Immunohistochemistry

Image 2. HIF1 alpha antibody IHC analysis in formalin fixed and paraffin embedded lung carcinoma.



Western Blotting

Image 3. Western blot analysis of HIF1 alpha antibody and CHO lysate

Please check the [product details page](#) for more images. Overall 5 images are available for ABIN3031283.