



Datasheet for ABIN3031288  
**anti-IgD antibody (AA 37-64)**



[Go to Product page](#)

2 Images

Overview

Quantity:	0.4 mL
Target:	IgD
Binding Specificity:	AA 37-64
Reactivity:	Human
Host:	Mouse
Clonality:	Monoclonal
Conjugate:	This IgD antibody is un-conjugated
Application:	ELISA, Western Blotting (WB)

Product Details

Immunogen:	A portion of amino acids 37-64 from the human protein was used as the immunogen for this IGHD antibody.
Clone:	607CT8-4-4
Isotype:	IgM
Purification:	Purified

Target Details

Target:	IgD
Alternative Name:	IGHD ( <a href="#">IgD Products</a> )
Target Type:	Antibody

## Target Details

---

**Background:** IgD is the major antigen receptor isotype on the surface of most peripheral B-cells, where it is coexpressed with IgM. The membrane-bound IgD (mIgD) induces the phosphorylation of CD79A and CD79B by the Src family of protein tyrosine kinases. Soluble IgD (sIgD) concentration in serum below those of IgG, IgA, and IgM but much higher than that of IgE. IgM and IgD molecules present on B cells have identical V regions and antigen-binding sites. After the antigen binds to the B-cell receptor, the secreted form sIgD is shut off. IgD is a potent inducer of TNF, IL1B, and IL1RN. IgD also induces release of IL6, IL10, and LIF from peripheral blood mononuclear cells. Monocytes seem to be the main producers of cytokines in vitro in the presence of IgD.

**UniProt:** [P01880](#)

## Application Details

---

**Application Notes:** Titration of the IGHD antibody may be required due to differences in protocols and secondary/substrate sensitivity.\. Western blot: 1:100-1:250

**Restrictions:** For Research Use only

## Handling

---

**Format:** Liquid

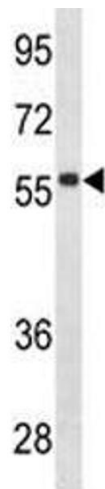
**Buffer:** In 1X PBS pH 7.4 with 0.09 % sodium azide

**Preservative:** Sodium azide

**Precaution of Use:** This product contains Sodium azide: a POISONOUS AND HAZARDOUS SUBSTANCE which should be handled by trained staff only.

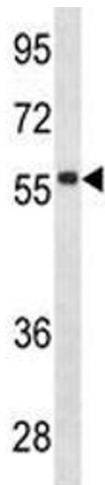
**Storage:** -20 °C

**Storage Comment:** Aliquot the IGHD antibody and store frozen at -20°C or colder. Avoid repeated freeze-thaw cycles.



#### Western Blotting

**Image 1.** IGHD antibody western blot analysis in CEM lysate.



#### Western Blotting

**Image 2.** IGHD antibody western blot analysis in CEM lysate.