



[Go to Product page](#)

Datasheet for ABIN3031289
anti-IL-6 antibody (AA 27-55)

5 Images

Overview

Quantity:	0.4 mL
Target:	IL-6 (IL6)
Binding Specificity:	AA 27-55
Reactivity:	Human
Host:	Rabbit
Clonality:	Polyclonal
Conjugate:	This IL-6 antibody is un-conjugated
Application:	Western Blotting (WB), ELISA, Immunohistochemistry (IHC), Flow Cytometry (FACS)

Product Details

Immunogen:	A portion of amino acids 27-55 from the human protein was used as the immunogen for this IL-6 antibody.
Isotype:	Ig Fraction
Purification:	Antigen affinity purified

Target Details

Target:	IL-6 (IL6)
Alternative Name:	IL-6 (IL6 Products)
Background:	This gene encodes a cytokine that functions in inflammation and the maturation of B cells. The protein is primarily produced at sites of acute and chronic inflammation, where it is secreted into the serum and induces a transcriptional inflammatory response through interleukin 6

Target Details

receptor, alpha. The functioning of this gene is implicated in a wide variety of inflammation-associated disease states, including susceptibility to diabetes mellitus and systemic juvenile rheumatoid arthritis.

UniProt: [P05231](#)

Pathways: [TLR Signaling](#), [Hormone Transport](#), [Negative Regulation of Hormone Secretion](#), [Myometrial Relaxation and Contraction](#), [Positive Regulation of Immune Effector Process](#), [Production of Molecular Mediator of Immune Response](#), [Regulation of Carbohydrate Metabolic Process](#), [Autophagy](#), [Cell RedoxHomeostasis](#), [Cancer Immune Checkpoints](#), [Inflammasome](#)

Application Details

Application Notes: Titration of the IL-6 antibody may be required due to differences in protocols and secondary/substrate sensitivity.\. Western blot: 1:1000,Flow Cytometry: 1:10-1:50,IHC (Paraffin): 1:10-1:50

Restrictions: For Research Use only

Handling

Format: Liquid

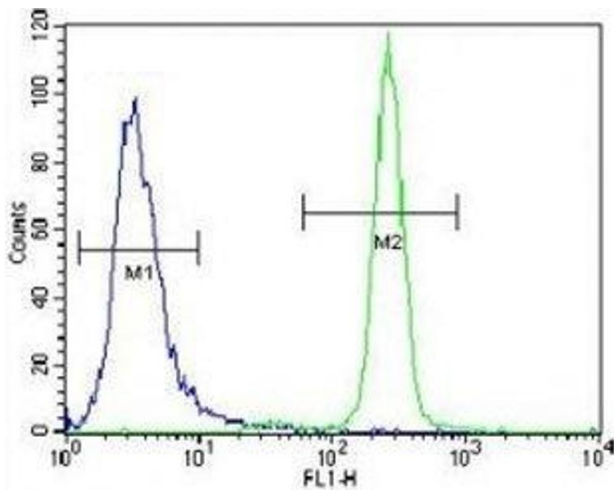
Buffer: In 1X PBS pH 7.4 with 0.09 % sodium azide

Preservative: Sodium azide

Precaution of Use: This product contains Sodium azide: a POISONOUS AND HAZARDOUS SUBSTANCE which should be handled by trained staff only.

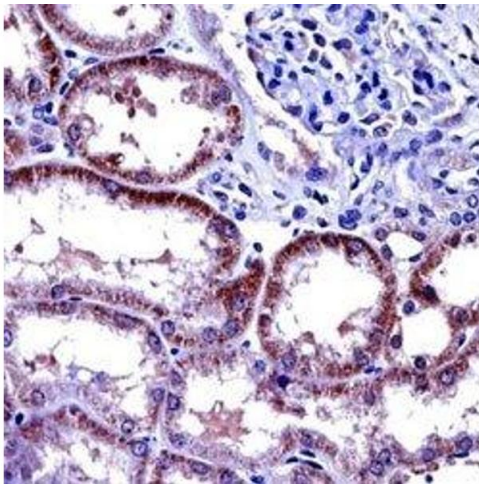
Storage: -20 °C

Storage Comment: Aliquot the IL-6 antibody and store frozen at -20°C or colder. Avoid repeated freeze-thaw cycles.



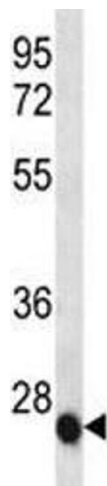
Flow Cytometry

Image 1. IL-6 antibody flow cytometric analysis of NCI-H460 cells (right histogram) compared to a negative control cell (left histogram). FITC-conjugated goat-anti-rabbit secondary Ab was used for the analysis.



Immunohistochemistry

Image 2. IL-6 antibody immunohistochemistry analysis in formalin fixed and paraffin embedded human kidney tissue.



Western Blotting

Image 3. IL-6 antibody western blot analysis in NCI-H460 lysate

Please check the [product details page](#) for more images. Overall 5 images are available for ABIN3031289.