

Datasheet for ABIN3031295
anti-IDO2 antibody (AA 1-20)[Go to Product page](#)

2 Images

Overview

Quantity:	100 µg
Target:	IDO2
Binding Specificity:	AA 1-20
Reactivity:	Human
Host:	Rabbit
Clonality:	Polyclonal
Conjugate:	This IDO2 antibody is un-conjugated
Application:	Western Blotting (WB)

Product Details

Immunogen:	Amino acids 1-20 (MLHFHYDTSNKIMEPHRPN-human) were used as the immunogen for this INDOL1 antibody.
Isotype:	IgG
Purification:	Antigen affinity

Target Details

Target:	IDO2
Alternative Name:	INDOL1 (IDO2 Products)
Background:	IDO2 (Indoleamine 2,3-dioxygenase 2), also called Indoleamine 2,3-dioxygenase-like 1, is an enzyme encoded by the INDOL1 gene which metabolizes tryptophan in the kynurenine pathway. By genomic sequence analysis, the gene is mapped on chromosome 8p12 just downstream of

Target Details

the INDO gene. And its exact cytogenetic location is 8p11.21. By database analysis using INDO as probe, followed by RT-PCR of total RNA from various tissues, IDO2 is cloned by human and mouse INDOL1. INDOL1 catabolizes tryptophan as determined by Kyn production, but unlike INDO, is inhibited by D-1-methyl-tryptophan(D-1MT) but not the L-1MT stereoisomer.

UniProt: [Q6ZQW0](#)

Application Details

Application Notes: The stated application concentrations are suggested starting amounts. Titration of the INDOL1 antibody may be required due to differences in protocols and secondary/substrate sensitivity.\. Western blot: 0.5-1 µg/mL

Restrictions: For Research Use only

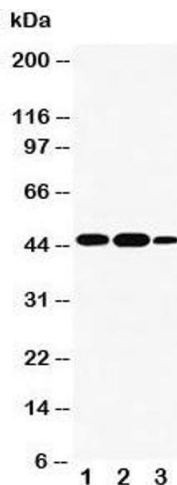
Handling

Buffer: 0.5 mg/mL if reconstituted with 0.2 mL sterile DI water

Storage: -20 °C

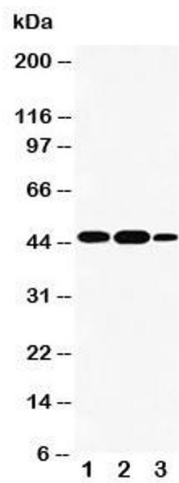
Storage Comment: After reconstitution, the INDOL1 antibody can be stored for up to one month at 4°C. For long-term, aliquot and store at -20°C. Avoid repeated freezing and thawing.

Images



Western Blotting

Image 1. Western blot testing of INDOL1 antibody and Lane 1: A549; 2: human placenta; 3: A431 cell lysate. Expected size: ~45KD



Western Blotting

Image 2. Western blot testing of INDOL1 antibody and Lane 1: A549