

Datasheet for ABIN3031297
anti-MCL-1 antibody (AA 217-245)



[Go to Product page](#)

3 Images

Overview

Quantity:	0.4 mL
Target:	MCL-1 (MCL1)
Binding Specificity:	AA 217-245
Reactivity:	Human
Host:	Rabbit
Clonality:	Polyclonal
Conjugate:	This MCL-1 antibody is un-conjugated
Application:	Western Blotting (WB), ELISA, Immunohistochemistry (IHC)

Product Details

Immunogen:	A portion of amino acids 217-245 from the human protein was used as the immunogen for this MCL1 antibody.
Isotype:	Ig Fraction
Cross-Reactivity (Details):	Expected species reactivity: Rat
Purification:	Antigen affinity purified

Target Details

Target:	MCL-1 (MCL1)
Alternative Name:	MCL1 (MCL1 Products)
Background:	This gene encodes an anti-apoptotic protein, which is a member of the Bcl-2 family. Alternative

Target Details

splicing results in multiple transcript variants. The longest gene product (isoform 1) enhances cell survival by inhibiting apoptosis while the alternatively spliced shorter gene products (isoform 2 and isoform 3) promote apoptosis and are death-inducing.

UniProt: [Q07820](#)

Pathways: [MAPK Signaling](#)

Application Details

Application Notes: Titration of the MCL1 antibody may be required due to differences in protocols and secondary/substrate sensitivity.\. Western blot: 1:1000,IHC (Paraffin): 1:10-1:50

Restrictions: For Research Use only

Handling

Format: Liquid

Buffer: In 1X PBS, pH 7.4, with 0.09 % sodium azide

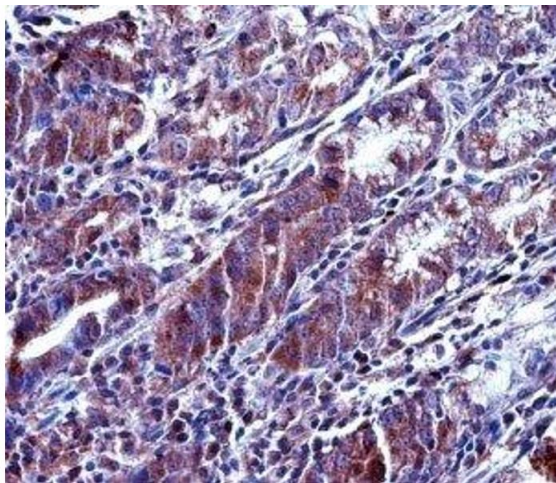
Preservative: Sodium azide

Precaution of Use: This product contains Sodium azide: a POISONOUS AND HAZARDOUS SUBSTANCE which should be handled by trained staff only.

Storage: -20 °C

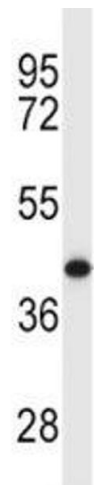
Storage Comment: Aliquot the MCL1 antibody and store frozen at -20°C or colder. Avoid repeated freeze-thaw cycles.

Images



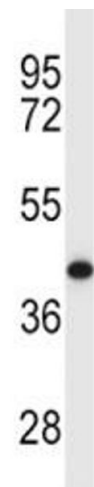
Immunohistochemistry

Image 1. MCL1 antibody immunohistochemistry analysis in formalin fixed and paraffin embedded human stomach tissue.



Western Blotting

Image 2. MCL1 antibody western blot analysis in Y79 lysate.
Predicted molecular weight: 37/29 kDa (isoforms 1/2).



Western Blotting

Image 3. MCL1 antibody western blot analysis in Y79 lysate.
Predicted molecular weight: 37/29 kDa (isoforms 1/2).