

Datasheet for ABIN3031299
anti-MCL-1 antibody (AA 191-226)

5 Images

[Go to Product page](#)

Overview

Quantity:	0.4 mL
Target:	MCL-1 (MCL1)
Binding Specificity:	AA 191-226
Reactivity:	Human, Mouse
Host:	Rabbit
Clonality:	Polyclonal
Conjugate:	This MCL-1 antibody is un-conjugated
Application:	Western Blotting (WB), ELISA, Immunohistochemistry (IHC), Flow Cytometry (FACS)

Product Details

Immunogen:	A portion of amino acids 191-226 from the human protein was used as the immunogen for this MCL1 antibody.
Isotype:	Ig Fraction
Purification:	Purified

Target Details

Target:	MCL-1 (MCL1)
Alternative Name:	MCL1 (MCL1 Products)
Background:	The Mcl-1 protein belongs to the Bcl-2 family. Alternative splicing occurs at this locus and two transcript variants encoding distinct isoforms have been identified. The longer gene product (isoform 1) enhances cell survival by inhibiting apoptosis while the alternatively spliced shorter

Target Details

gene product (isoform 2) promotes apoptosis and is death-inducing.

UniProt: [Q07820](#)

Pathways: [MAPK Signaling](#)

Application Details

Application Notes: Titration of the MCL1 antibody may be required due to differences in protocols and secondary/substrate sensitivity.\. Western blot: 1:1000,IHC (Paraffin): 1:10-1:50,Flow Cytometry: 1:10-1:50

Restrictions: For Research Use only

Handling

Format: Liquid

Buffer: In 1X PBS, pH 7.4, with 0.09 % sodium azide

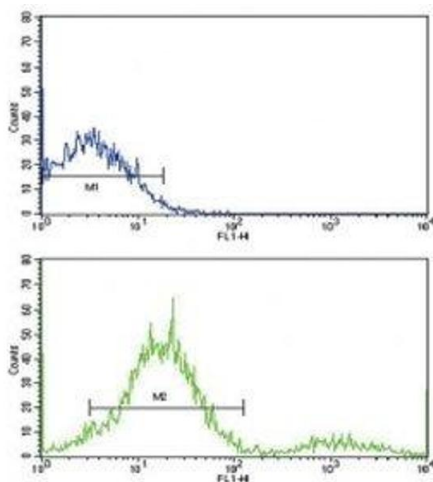
Preservative: Sodium azide

Precaution of Use: This product contains Sodium azide: a POISONOUS AND HAZARDOUS SUBSTANCE which should be handled by trained staff only.

Storage: -20 °C

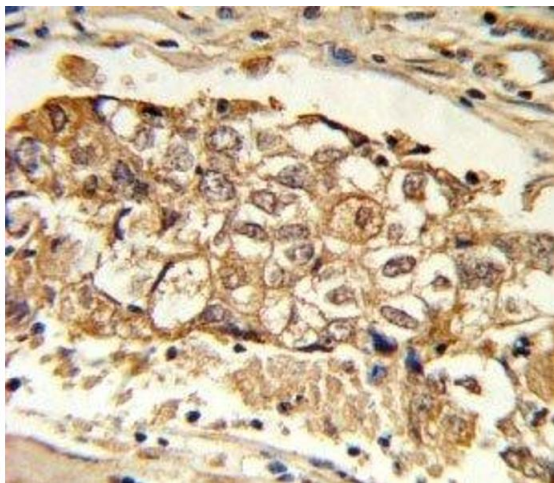
Storage Comment: Aliquot the MCL1 antibody and store frozen at -20°C or colder. Avoid repeated freeze-thaw cycles.

Images



Flow Cytometry

Image 1. Flow cytometric analysis of ZR-75-1 cells using MCL1 antibody (green) compared to a negative control (blue). FITC-conjugated goat-anti-rabbit secondary Ab was used for the analysis.



Immunohistochemistry

Image 2. IHC analysis of FFPE human breast carcinoma with MCL1 antibody



Western Blotting

Image 3. Western blot analysis of MCL1 antibody and Ramos lysate. Predicted molecular weight: 37/29 kDa (isoforms 1/2).

Please check the [product details page](#) for more images. Overall 5 images are available for ABIN3031299.