

Datasheet for ABIN3031320

**anti-IKBKB antibody**

5 Images

[Go to Product page](#)

## Overview

Quantity:	0.4 mL
Target:	IKBKB
Reactivity:	Human
Host:	Rabbit
Clonality:	Polyclonal
Conjugate:	This IKBKB antibody is un-conjugated
Application:	ELISA, Western Blotting (WB), Immunohistochemistry (IHC), Immunofluorescence (IF)

## Product Details

Immunogen:	This IKK beta antibody was produced from rabbits immunized with recombinant human IKK beta (full length sequence).
Isotype:	Ig Fraction
Purification:	Purified

## Target Details

Target:	IKBKB
Alternative Name:	IKK beta ( <a href="#">IKBKB Products</a> )
Background:	This gene encodes a member of the serine/threonine protein kinase family. The encoded protein, a component of a cytokine-activated protein complex that is an inhibitor of the essential transcription factor NF-kappa-B complex, phosphorylates sites that trigger the degradation of the inhibitor via the ubiquitination pathway, thereby activating the transcription

## Target Details

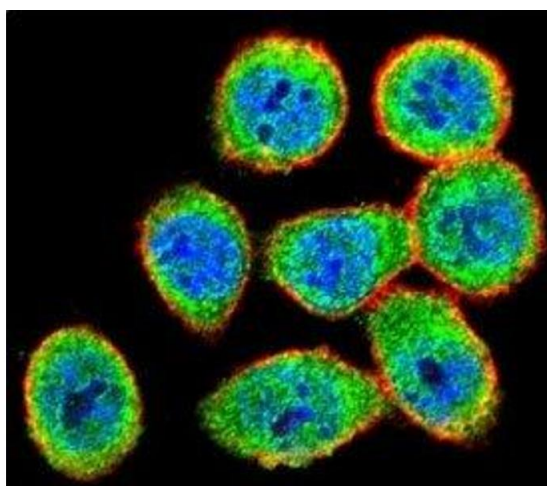
	factor.
UniProt:	<a href="#">O14920</a>
Pathways:	<a href="#">NF-kappaB Signaling</a> , <a href="#">RTK Signaling</a> , <a href="#">TCR Signaling</a> , <a href="#">TLR Signaling</a> , <a href="#">Fc-epsilon Receptor Signaling Pathway</a> , <a href="#">Neurotrophin Signaling Pathway</a> , <a href="#">Activation of Innate immune Response</a> , <a href="#">Production of Molecular Mediator of Immune Response</a> , <a href="#">Hepatitis C</a> , <a href="#">Toll-Like Receptors Cascades</a> , <a href="#">BCR Signaling</a> , <a href="#">Ubiquitin Proteasome Pathway</a> , <a href="#">S100 Proteins</a>

## Application Details

Application Notes:	Titration of the IKK beta antibody may be required due to differences in protocols and secondary/substrate sensitivity.\. Western blot: 1:1000,IHC (Paraffin): 1:50-1:100,Immunofluorescence: 1:10-1:50
Restrictions:	For Research Use only

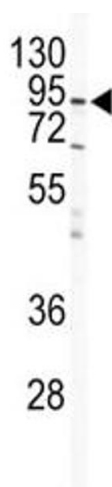
## Handling

Format:	Liquid
Buffer:	In 1X PBS, pH 7.4, with 0.09 % sodium azide
Preservative:	Sodium azide
Precaution of Use:	This product contains Sodium azide: a POISONOUS AND HAZARDOUS SUBSTANCE which should be handled by trained staff only.
Storage:	-20 °C
Storage Comment:	Aliquot the IKK beta antibody and store frozen at -20°C or colder. Avoid repeated freeze-thaw cycles.



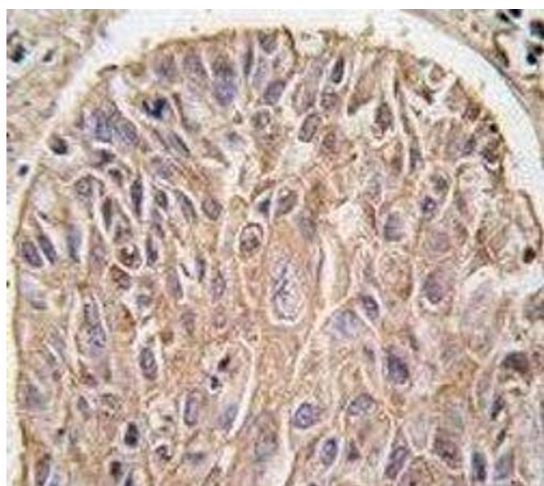
#### Immunofluorescence

**Image 1.** Confocal immunofluorescent analysis of IKK beta antibody with HeLa cells followed by Alexa Fluor 488-conjugated goat anti-rabbit IgG (green). Actin filaments have been labeled with Alexa Fluor 555 Phalloidin (red). DAPI was used as a nuclear counterstain



#### Western Blotting

**Image 2.** Western blot analysis of IKK beta antibody and HeLa lysate. Predicted molecular weight ~87 kDa.



#### Immunohistochemistry

**Image 3.** IHC analysis of FFPE human lung carcinoma tissue stained with IKK beta antibody

Please check the [product details page](#) for more images. Overall 5 images are available for ABIN3031320.