

Datasheet for ABIN3031328  
**anti-ITPR3 antibody (AA 2411-2758)**



[Go to Product page](#)

8 Images

## Overview

|                      |  |
|----------------------|--|
| Quantity:            | 100 µg   |
| Target:              | ITPR3  |
| Binding Specificity: | AA 2411-2758   |
| Reactivity:          | Human, Mouse, Rat  |
| Host:                | Rabbit   |
| Clonality:           | Polyclonal   |
| Conjugate:           | This ITPR3 antibody is un-conjugated   |
| Application:         | Western Blotting (WB), Immunohistochemistry (Paraffin-embedded Sections) (IHC (p)) |

## Product Details

|               |  |
|---------------|--|
| Immunogen:    | Human partial recombinant protein (AA 2411-2758) was used as the immunogen for this IP3R antibody. |
| Isotype:      | IgG  |
| Purification: | Antigen affinity   |

## Target Details

|                   |  |
|-------------------|--|
| Target:           | ITPR3  |
| Alternative Name: | IP3R ( <a href="#">ITPR3 Products</a> )  |
| Background:       | Inositol 1,4,5-trisphosphate receptor type 1, also known as IP3R or IP3R1, is a protein that in humans is encoded by the ITPR1 gene. It is mapped to 3p26.1. The product of the ITPR1 gene is predominantly enriched in cerebellar Purkinje cells but is also concentrated in neurons in the |

## Target Details

hippocampal CA1 region, caudate-putamen, and cerebral cortex. IP3R is an intracellular IP3-gated calcium channel that modulates intracellular calcium signaling. Upon stimulation by inositol 1,4,5-trisphosphate, this receptor mediates calcium release from the endoplasmic reticulum. Mutations in the gene cause spinocerebellar ataxia type 15, a disease associated with an heterogeneous group of cerebellar disorders.

|           |  |
|-----------|--|
| Gene ID:  | 3708   |
| Pathways: | <a href="#">Fc-epsilon Receptor Signaling Pathway</a> , <a href="#">EGFR Signaling Pathway</a> , <a href="#">Neurotrophin Signaling Pathway</a> , <a href="#">Thyroid Hormone Synthesis</a> , <a href="#">Myometrial Relaxation and Contraction</a> , <a href="#">G-protein mediated Events</a> , <a href="#">Interaction of EGFR with phospholipase C-gamma</a> , <a href="#">BCR Signaling</a> |

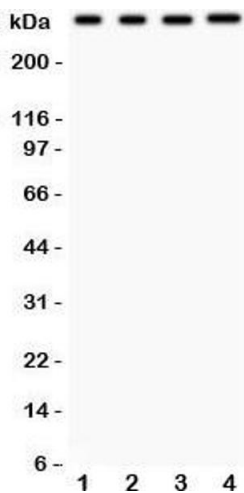
## Application Details

|                    |  |
|--------------------|--|
| Application Notes: | The stated application concentrations are suggested starting amounts. Titration of the IP3R antibody may be required due to differences in protocols and secondary/substrate sensitivity.\.<br>Western blot: 0.5-1 µg/mL,IHC (Paraffin): 0.5-1 µg/mL |
| Restrictions:      | For Research Use only  |

## Handling

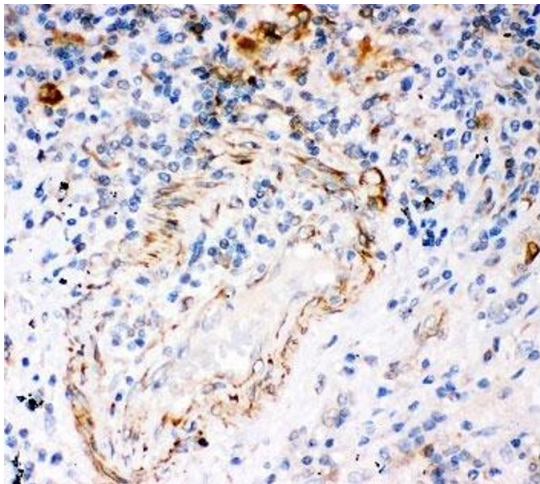
|                  |   |
|------------------|---|
| Buffer:          | 0.5 mg/mL if reconstituted with 0.2 mL sterile DI water   |
| Storage:         | -20 °C  |
| Storage Comment: | After reconstitution, the IP3R antibody can be stored for up to one month at 4°C. For long-term, aliquot and store at -20°C. Avoid repeated freezing and thawing. |

## Images



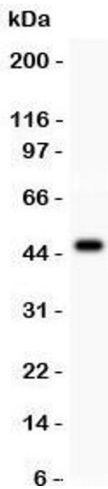
### Western Blotting

**Image 1.** Western blot testing of IP3R antibody and Lane 1: rat brain; 2: (r) liver; 3: human HeLa; 4: (h) HEPG2. Expected/observed size ~314KD



**Immunohistochemistry**

**Image 2.** IHC-P: IP3R antibody testing of human lung cancer tissue



**Western Blotting**

**Image 3.** Western blot testing of IP3R antibody and recombinant human protein (0.5ng)

Please check the [product details page](#) for more images. Overall 8 images are available for ABIN3031328.