

Datasheet for ABIN3031342
anti-IGF1 antibody (AA 115-144)

8 Images

[Go to Product page](#)

Overview

Quantity:	0.4 mL
Target:	IGF1
Binding Specificity:	AA 115-144
Reactivity:	Human
Host:	Rabbit
Clonality:	Polyclonal
Conjugate:	This IGF1 antibody is un-conjugated
Application:	Western Blotting (WB), Immunohistochemistry (IHC), ELISA, Immunofluorescence (IF), Flow Cytometry (FACS)

Product Details

Immunogen:	A portion of amino acids 115-144 from the human protein was used as the immunogen for this IGF1 antibody.
Isotype:	Ig Fraction
Purification:	Antigen affinity purified

Target Details

Target:	IGF1
Alternative Name:	IGF1 (IGF1 Products)
Background:	The protein encoded by this gene is similar to insulin in function and structure and is a member of a family of proteins involved in mediating growth and development. The encoded protein is

Target Details

processed from a precursor, bound by a specific receptor, and secreted. Defects in this gene are a cause of insulin-like growth factor I deficiency. Several transcript variants encoding different isoforms have been found for this gene.

Pathways:

[RTK Signaling](#), [Intracellular Steroid Hormone Receptor Signaling Pathway](#), [Peptide Hormone Metabolism](#), [Hormone Activity](#), [Regulation of Intracellular Steroid Hormone Receptor Signaling](#), [Regulation of Hormone Metabolic Process](#), [Regulation of Hormone Biosynthetic Process](#), [Stem Cell Maintenance](#), [Glycosaminoglycan Metabolic Process](#), [Regulation of Carbohydrate Metabolic Process](#), [Autophagy](#), [Smooth Muscle Cell Migration](#), [Activated T Cell Proliferation](#), [Positive Regulation of fat Cell Differentiation](#)

Application Details

Application Notes:

Titration of the IGF1 antibody may be required due to differences in protocols and secondary/substrate sensitivity.\. Western blot: 1:1000,Immunofluorescence: 1:10-1:50,Flow Cytometry: 1:10-1:50,IHC (Paraffin): 1:10-1:50

Restrictions:

For Research Use only

Handling

Format:

Liquid

Buffer:

In 1X PBS pH 7.4 with 0.09 % sodium azide

Preservative:

Sodium azide

Precaution of Use:

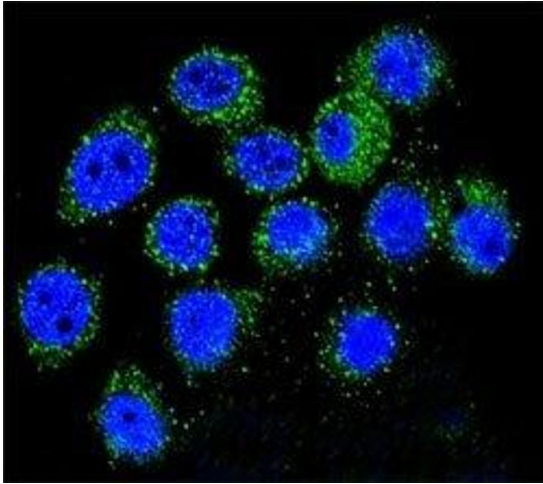
This product contains Sodium azide: a POISONOUS AND HAZARDOUS SUBSTANCE which should be handled by trained staff only.

Storage:

-20 °C

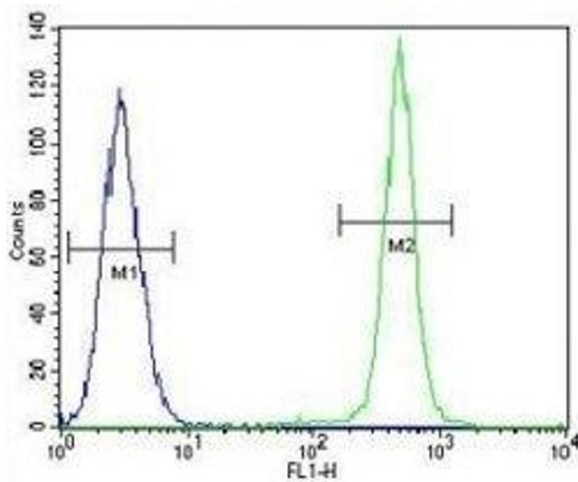
Storage Comment:

Aliquot the IGF1 antibody and store frozen at -20°C or colder. Avoid repeated freeze-thaw cycles.



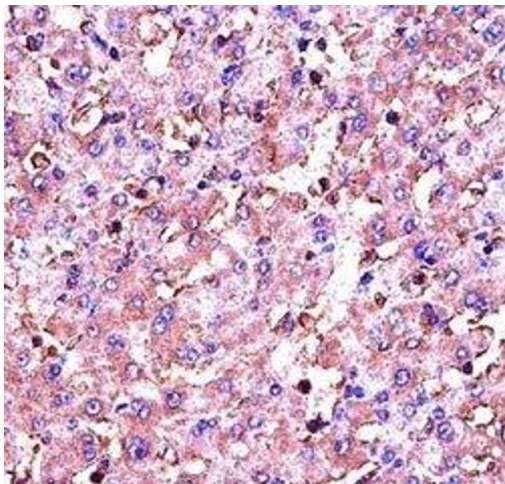
Immunofluorescence

Image 1. Confocal immunofluorescent analysis of IGF1 antibody with A549 cells followed by Alexa Fluor 488-conjugated goat anti-rabbit IgG (green). DAPI was used as a nuclear counterstain (blue).



Flow Cytometry

Image 2. IGF1 antibody flow cytometric analysis of A549 cells (green) compared to a negative control cell (blue). FITC-conjugated goat-anti-rabbit secondary Ab was used for the analysis.



Immunohistochemistry

Image 3. IGF1 antibody immunohistochemistry analysis in formalin fixed and paraffin embedded human liver tissue.

Please check the [product details page](#) for more images. Overall 8 images are available for ABIN3031342.