

Datasheet for ABIN3031345
anti-IGF1R antibody (AA 51-77)



[Go to Product page](#)

6 Images

Overview

Quantity:	0.4 mL
Target:	IGF1R
Binding Specificity:	AA 51-77
Reactivity:	Human
Host:	Rabbit
Clonality:	Polyclonal
Conjugate:	This IGF1R antibody is un-conjugated
Application:	Western Blotting (WB), ELISA, Immunohistochemistry (IHC), Immunofluorescence (IF), Flow Cytometry (FACS)

Product Details

Immunogen:	A portion of amino acids 51-77 from the human protein was used as the immunogen for this IGF1R antibody.
Isotype:	Ig Fraction
Cross-Reactivity (Details):	Expected species reactivity: Mouse, Rat
Purification:	Purified

Target Details

Target:	IGF1R
Alternative Name:	IGF1R (IGF1R Products)

Target Details

Background: IGF1R is a tyrosine kinase which mediates actions of insulin-like growth factor 1 (IGF1). Binds IGF1 with high affinity and IGF2 and insulin (INS) with a lower affinity. The activated IGF1 receptor is involved in cell growth and survival control. It is crucial for tumor transformation and survival of malignant cell. Ligand binding activates the receptor kinase, leading to receptor autophosphorylation, and tyrosines phosphorylation of multiple substrates, that function as signaling adapter proteins including, the insulin-receptor substrates (IRS1/2), Shc and 14-3-3 proteins. Phosphorylation of IRSs proteins lead to the activation of two main signaling pathways: the PI3K-AKT/PKB pathway and the Ras-MAPK pathway. The result of activating the MAPK pathway is increased cellular proliferation, whereas activating the PI3K pathway inhibits apoptosis and stimulates protein synthesis.

UniProt: [P08069](#)

Pathways: [RTK Signaling](#), [Regulation of Hormone Metabolic Process](#), [Regulation of Hormone Biosynthetic Process](#), [Autophagy](#)

Application Details

Application Notes: Titration of the IGF1R antibody may be required due to differences in protocols and secondary/substrate sensitivity. \. Western blot: 1:1000,IHC (Paraffin): 1:50-1:100,Flow Cytometry: 1:10-1:50,Immunofluorescence: 1:10-1:50

Restrictions: For Research Use only

Handling

Format: Liquid

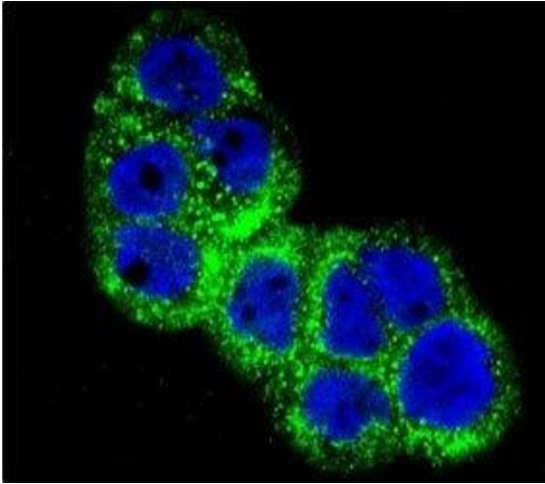
Buffer: In 1X PBS, pH 7.4, with 0.09 % sodium azide

Preservative: Sodium azide

Precaution of Use: This product contains Sodium azide: a POISONOUS AND HAZARDOUS SUBSTANCE which should be handled by trained staff only.

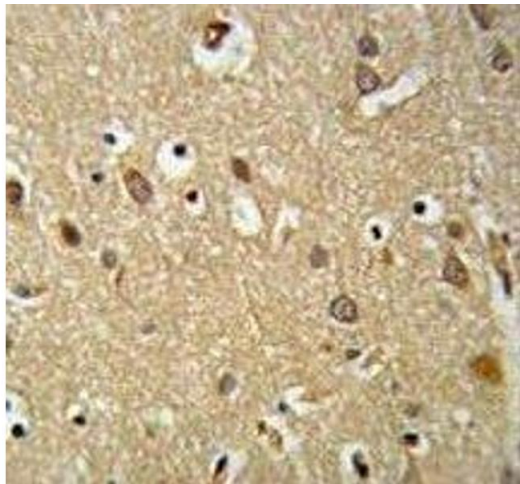
Storage: -20 °C

Storage Comment: Aliquot the IGF1R antibody and store frozen at -20°C or colder. Avoid repeated freeze-thaw cycles.



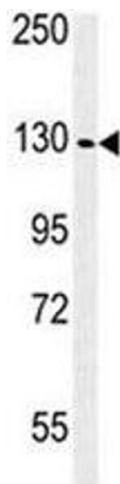
Immunofluorescence

Image 1. Confocal immunofluorescent analysis of IGF1R antibody with WiDr cells followed by Alexa Fluor 488-conjugated goat anti-rabbit IgG (green). DAPI was used as a nuclear counterstain (blue).



Immunohistochemistry

Image 2. IGF1R antibody IHC analysis in formalin fixed and paraffin embedded brain tissue.



Western Blotting

Image 3. Western blot analysis of IGF1R antibody and WiDr lysate. Predicted molecular weight: ~200 kDa (pro), 120-130 kDa (alpha), 90-97 kDa (beta).

Please check the [product details page](#) for more images. Overall 6 images are available for ABIN3031345.