

Datasheet for ABIN3031346  
**anti-IGF2 antibody (AA 39-68)**[Go to Product page](#)

## 6 Images

## Overview

Quantity:	0.2 mL
Target:	IGF2
Binding Specificity:	AA 39-68
Reactivity:	Human, Mouse
Host:	Rabbit
Clonality:	Polyclonal
Conjugate:	This IGF2 antibody is un-conjugated
Application:	Western Blotting (WB), Immunohistochemistry (IHC), ELISA, Flow Cytometry (FACS)

## Product Details

Immunogen:	A portion of amino acids 39-68 from the human protein was used as the immunogen for this IGF2 antibody.
Isotype:	Ig Fraction
Purification:	Antigen affinity purified

## Target Details

Target:	IGF2
Alternative Name:	IGF2 ( <a href="#">IGF2 Products</a> )
Background:	This gene encodes a member of the insulin family of polypeptide growth factors, which are involved in development and growth. It is an imprinted gene, expressed only from the paternal allele, and epigenetic changes at this locus are associated with Wilms tumour, Beckwith-

## Target Details

Wiedemann syndrome, rhabdomyosarcoma, and Silver-Russell syndrome. A read-through INS-IGF2 gene exists, whose 5' region overlaps the INS gene and the 3' region overlaps this gene. Alternatively spliced transcript variants encoding different isoforms have been found for this gene.

UniProt: [P01344](#)

Pathways: [Hormone Activity](#), [Regulation of Hormone Metabolic Process](#), [Regulation of Hormone Biosynthetic Process](#), [Regulation of Carbohydrate Metabolic Process](#), [Activated T Cell Proliferation](#)

## Application Details

Application Notes: Titration of the IGF2 antibody may be required due to differences in protocols and secondary/substrate sensitivity.\. Western blot: 1:1000,IHC (Paraffin): 1:50-1:100,Flow Cytometry: 1:10-1:50

Restrictions: For Research Use only

## Handling

Format: Liquid

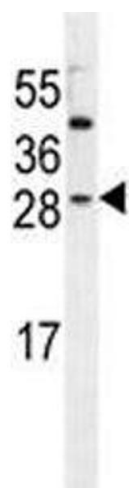
Buffer: In 1X PBS, pH 7.4, with 0.09 % sodium azide

Preservative: Sodium azide

Precaution of Use: This product contains Sodium azide: a POISONOUS AND HAZARDOUS SUBSTANCE which should be handled by trained staff only.

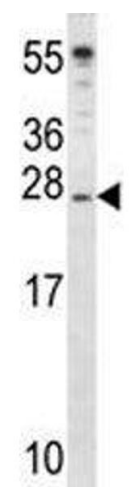
Storage: -20 °C

Storage Comment: Aliquot the IGF2 antibody and store frozen at -20°C or colder. Avoid repeated freeze-thaw cycles.



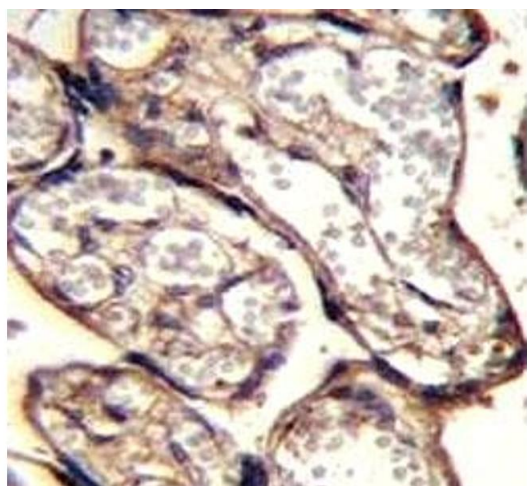
#### Western Blotting

**Image 1.** IGF2 antibody western blot analysis in HeLa lysate. Predicted molecular weight: 20, 20, 26 kDa (isoforms 1-3).



#### Western Blotting

**Image 2.** IGF2 antibody western blot analysis in mouse cerebellum tissue lysate. Predicted molecular weight: 20, 20, 26 kDa (isoforms 1-3).



#### Immunohistochemistry

**Image 3.** IGF2 antibody immunohistochemistry analysis in formalin fixed and paraffin embedded human placenta tissue.

Please check the [product details page](#) for more images. Overall 6 images are available for ABIN3031346.