

Datasheet for ABIN3031354  
**anti-IGFBP3 antibody (AA 163-193)**[Go to Product page](#)

## 3 Images

## Overview

Quantity:	0.4 mL
Target:	IGFBP3
Binding Specificity:	AA 163-193
Reactivity:	Human
Host:	Rabbit
Clonality:	Polyclonal
Conjugate:	This IGFBP3 antibody is un-conjugated
Application:	Western Blotting (WB), Immunohistochemistry (IHC), ELISA

## Product Details

Immunogen:	A portion of amino acids 163-193 from the human protein was used as the immunogen for this IGFBP3 antibody.
Isotype:	Ig Fraction
Cross-Reactivity (Details):	Expected species reactivity: Rat
Purification:	Purified

## Target Details

Target:	IGFBP3
Alternative Name:	IGFBP3 ( <a href="#">IGFBP3 Products</a> )
Background:	IGFBP3 is a member of the insulin-like growth factor binding protein (IGFBP) family with an

## Target Details

IGFBP domain and a thyroglobulin type-I domain. The protein forms a ternary complex with insulin-like growth factor acid-labile subunit (IGFALS) and either insulin-like growth factor (IGF) I or II. In this form, it circulates in the plasma, prolonging the half-life of IGFs and altering their interaction with cell surface receptors.

UniProt: [P17936](#)

Pathways: [Myometrial Relaxation and Contraction](#), [Regulation of Muscle Cell Differentiation](#), [Skeletal Muscle Fiber Development](#), [Regulation of Carbohydrate Metabolic Process](#), [Autophagy](#), [Smooth Muscle Cell Migration](#), [Growth Factor Binding](#)

## Application Details

Application Notes: Titration of the IGFBP3 antibody may be required due to differences in protocols and secondary/substrate sensitivity.\. Western blot: 1:1000,IHC (Paraffin): 1:10-1:50

Restrictions: For Research Use only

## Handling

Format: Liquid

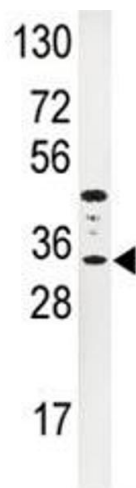
Buffer: In 1X PBS, pH 7.4, with 0.09 % sodium azide

Preservative: Sodium azide

Precaution of Use: This product contains Sodium azide: a POISONOUS AND HAZARDOUS SUBSTANCE which should be handled by trained staff only.

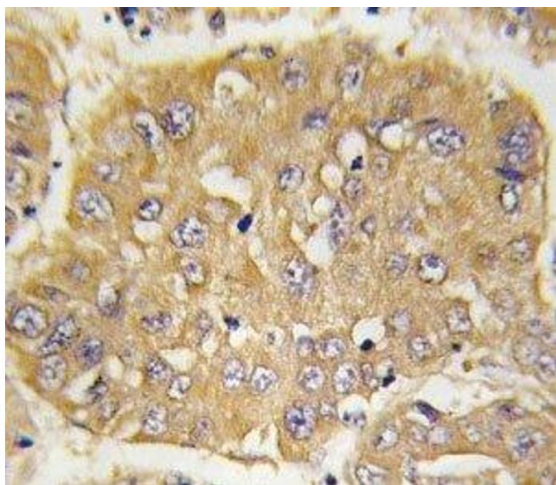
Storage: -20 °C

Storage Comment: Aliquot the IGFBP3 antibody and store frozen at -20°C or colder. Avoid repeated freeze-thaw cycles.



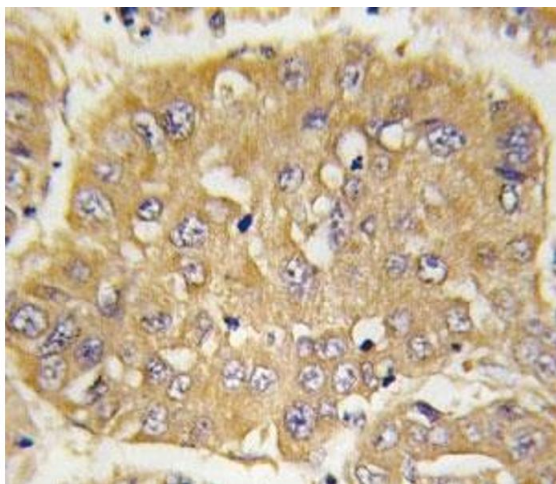
#### Western Blotting

**Image 1.** Western blot analysis of IGFBP3 antibody and HepG2 lysate.



#### Immunohistochemistry

**Image 2.** IHC analysis of FFPE human hepatocarcinoma tissue stained with IGFBP3 antibody



#### Immunohistochemistry

**Image 3.** IHC analysis of FFPE human hepatocarcinoma tissue stained with IGFBP3 antibody