

Datasheet for ABIN3031356
anti-IGFBP4 antibody (AA 96-124)[Go to Product page](#)

3 Images

Overview

Quantity:	0.4 mL
Target:	IGFBP4
Binding Specificity:	AA 96-124
Reactivity:	Human, Mouse
Host:	Rabbit
Clonality:	Polyclonal
Conjugate:	This IGFBP4 antibody is un-conjugated
Application:	Western Blotting (WB), Immunohistochemistry (IHC), ELISA

Product Details

Immunogen:	A portion of amino acids 96-124 from the human protein was used as the immunogen for this IGFBP4 antibody.
Isotype:	Ig Fraction
Cross-Reactivity (Details):	Expected species reactivity: Bovine, Pig
Purification:	Antigen affinity purified

Target Details

Target:	IGFBP4
Alternative Name:	IGFBP4 (IGFBP4 Products)
Background:	This gene is a member of the insulin-like growth factor binding protein (IGFBP) family and

Target Details

encodes a protein with an IGFBP domain and a thyroglobulin type-I domain. The protein binds both insulin-like growth factors (IGFs) I and II and circulates in the plasma in both glycosylated and non-glycosylated forms. Binding of this protein prolongs the half-life of the IGFs and alters their interaction with cell surface receptors.

UniProt: [P22692](#)

Pathways: [WNT Signaling](#), [Myometrial Relaxation and Contraction](#), [Regulation of Carbohydrate Metabolic Process](#)

Application Details

Application Notes: Titration of the IGFBP4 antibody may be required due to differences in protocols and secondary/substrate sensitivity.\. Western blot: 1:1000,IHC (Paraffin): 1:10-1:50

Restrictions: For Research Use only

Handling

Format: Liquid

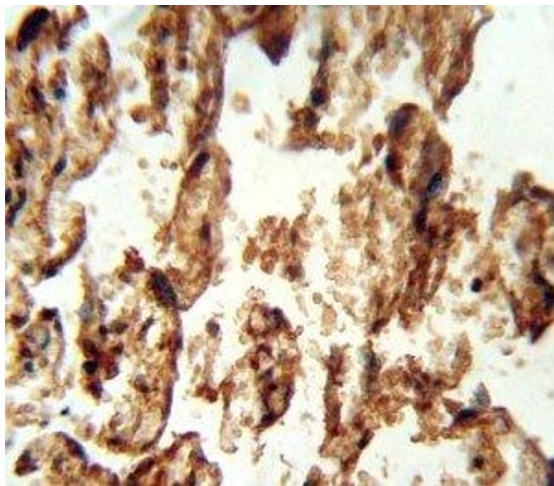
Buffer: In 1X PBS, pH 7.4, with 0.09 % sodium azide

Preservative: Sodium azide

Precaution of Use: This product contains Sodium azide: a POISONOUS AND HAZARDOUS SUBSTANCE which should be handled by trained staff only.

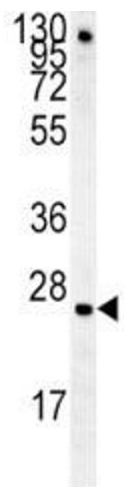
Storage: -20 °C

Storage Comment: Aliquot the IGFBP4 antibody and store frozen at -20°C or colder. Avoid repeated freeze-thaw cycles.



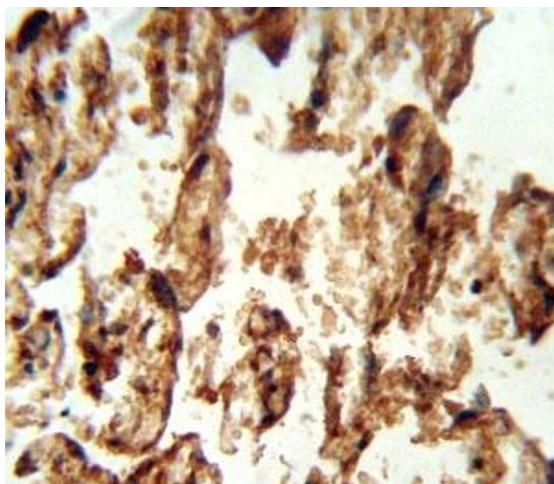
Immunohistochemistry

Image 1. IGFBP4 antibody immunohistochemistry analysis in formalin fixed and paraffin embedded human placenta tissue.



Western Blotting

Image 2. IGFBP4 antibody western blot analysis in mouse lung tissue lysate.



Immunohistochemistry

Image 3. IGFBP4 antibody immunohistochemistry analysis in formalin fixed and paraffin embedded human placenta tissue.