



Datasheet for ABIN3031358
anti-IGFBP6 antibody (AA 176-200)



[Go to Product page](#)

5 Images

Overview

Quantity:	0.4 mL
Target:	IGFBP6
Binding Specificity:	AA 176-200
Reactivity:	Human
Host:	Rabbit
Clonality:	Polyclonal
Conjugate:	This IGFBP6 antibody is un-conjugated
Application:	Western Blotting (WB), ELISA, Immunohistochemistry (IHC), Flow Cytometry (FACS)

Product Details

Immunogen:	A portion of amino acids 176-200 from the human protein was used as the immunogen for this IGFBP6 antibody.
Isotype:	Ig Fraction
Cross-Reactivity (Details):	Expected species reactivity: Bovine
Purification:	Purified

Target Details

Target:	IGFBP6
Alternative Name:	IGFBP6 (IGFBP6 Products)
Background:	IGFBP6 (IGF binding protein 6) is a member of the IGFBP family that regulates the actions of

Target Details

IGFs. It acts extracellularly in an autocrine/paracrine manner. IGFBP6 binds preferentially to IGF-II. IGFBP6 has been shown to inhibit the growth of tumour cells and to promote apoptosis.

UniProt: [P24592](#)

Pathways: [WNT Signaling, Myometrial Relaxation and Contraction](#)

Application Details

Application Notes: Titration of the IGFBP6 antibody may be required due to differences in protocols and secondary/substrate sensitivity.\. Western blot: 1:1000,IHC (Paraffin): 1:50-1:100,Flow Cytometry: 1:10-1:50

Restrictions: For Research Use only

Handling

Format: Liquid

Buffer: In 1X PBS, pH 7.4, with 0.09 % sodium azide

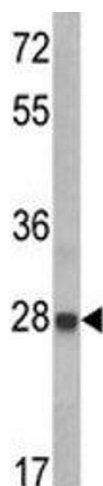
Preservative: Sodium azide

Precaution of Use: This product contains Sodium azide: a POISONOUS AND HAZARDOUS SUBSTANCE which should be handled by trained staff only.

Storage: -20 °C

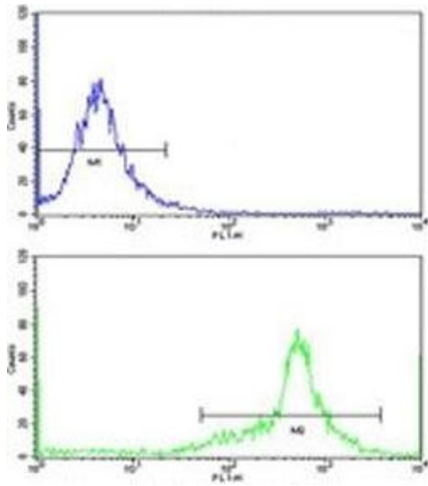
Storage Comment: Aliquot the IGFBP6 antibody and store frozen at -20°C or colder. Avoid repeated freeze-thaw cycles.

Images



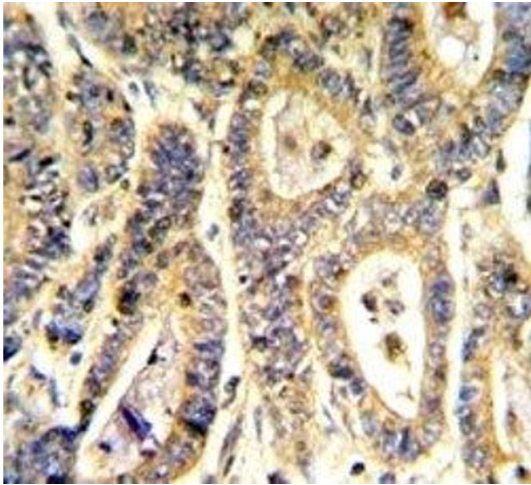
Western Blotting

Image 1. Western blot analysis of IGFBP6 antibody and CEM lysate.



Flow Cytometry

Image 2. Flow cytometric analysis of WiDr cells using IGFBP6 antibody (green) compared to a negative control (blue). FITC-conjugated goat-anti-rabbit secondary Ab was used for the analysis.



Immunohistochemistry

Image 3. IHC analysis of FFPE human colon carcinoma stained with IGFBP6 antibody

Please check the [product details page](#) for more images. Overall 5 images are available for ABIN3031358.