



[Go to Product page](#)

Datasheet for ABIN3031359

## anti-Integrin alpha 1 antibody (AA 727-755)

### 3 Images

#### Overview

Quantity:	0.4 mL
Target:	Integrin alpha 1 (ITGA1)
Binding Specificity:	AA 727-755
Reactivity:	Human, Mouse
Host:	Rabbit
Clonality:	Polyclonal
Conjugate:	This Integrin alpha 1 antibody is un-conjugated
Application:	Western Blotting (WB), Immunohistochemistry (IHC), ELISA

#### Product Details

Immunogen:	A portion of amino acids 727-755 from the human protein was used as the immunogen for this Integrin alpha 1 antibody.
Isotype:	Ig Fraction
Purification:	Antigen affinity purified

#### Target Details

Target:	Integrin alpha 1 (ITGA1)
Alternative Name:	Integrin alpha 1 ( <a href="#">ITGA1 Products</a> )
Background:	ITGA1 is the alpha 1 subunit of integrin receptors. This protein heterodimerizes with the beta 1 subunit to form a cell-surface receptor for collagen and laminin. The heterodimeric receptor is involved in cell-cell adhesion and may play a role in inflammation and fibrosis. The alpha 1

## Target Details

subunit contains an inserted (I) von Willebrand factor type I domain which is thought to be involved in collagen binding.

UniProt: [P56199](#)

Pathways: [EGFR Signaling Pathway](#), [CXCR4-mediated Signaling Events](#), [Signaling of Hepatocyte Growth Factor Receptor](#), [Integrin Complex](#)

## Application Details

Application Notes: Titration of the Integrin alpha 1 antibody may be required due to differences in protocols and secondary/substrate sensitivity.\. Western blot: 1:1000,IHC (Paraffin): 1:10-1:50

Restrictions: For Research Use only

## Handling

Format: Liquid

Buffer: In 1X PBS, pH 7.4, with 0.09 % sodium azide

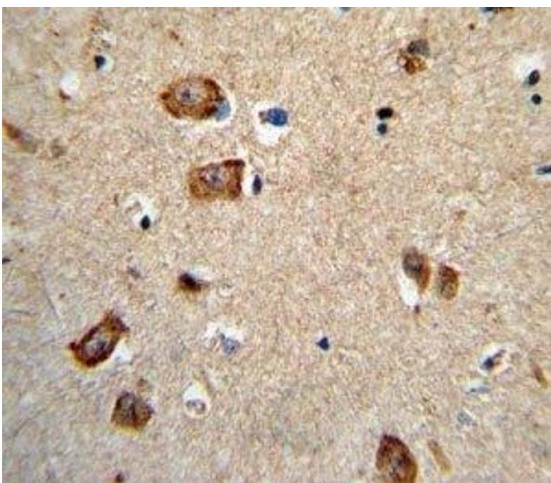
Preservative: Sodium azide

Precaution of Use: This product contains Sodium azide: a POISONOUS AND HAZARDOUS SUBSTANCE which should be handled by trained staff only.

Storage: -20 °C

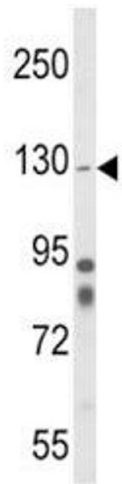
Storage Comment: Aliquot the Integrin alpha 1 antibody and store frozen at -20°C or colder. Avoid repeated freeze-thaw cycles.

## Images



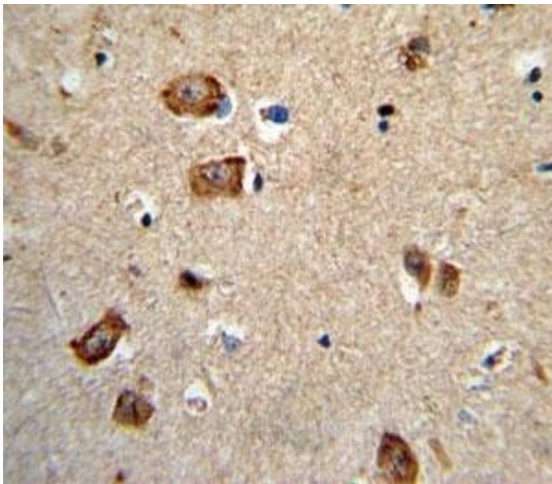
### Immunohistochemistry

**Image 1.** IHC analysis of FFPE human brain tissue stained with Integrin alpha 1 antibody



### Western Blotting

**Image 2.** Western blot analysis of Integrin alpha 1 antibody and mouse cerebellum tissue lysate



### Immunohistochemistry

**Image 3.** IHC analysis of FFPE human brain tissue stained with Integrin alpha 1 antibody