

Datasheet for ABIN3031361

anti-Integrin alpha 1 antibody (C-Term)**6** Images**1** Publication[Go to Product page](#)

Overview

Quantity:	100 µg
Target:	Integrin alpha 1 (ITGA1)
Binding Specificity:	C-Term
Reactivity:	Human, Mouse, Rat
Host:	Rabbit
Clonality:	Polyclonal
Conjugate:	This Integrin alpha 1 antibody is un-conjugated
Application:	Western Blotting (WB), Immunohistochemistry (Paraffin-embedded Sections) (IHC (p))

Product Details

Immunogen:	An amino acid sequence from the C-terminus of human Integrin alpha 1 (SNQKRELAIQISKD) was used as the immunogen for this Integrin alpha 1 antibody.
Isotype:	IgG
Purification:	Antigen affinity

Target Details

Target:	Integrin alpha 1 (ITGA1)
Alternative Name:	Integrin alpha 1 (ITGA1 Products)
Background:	Integrin alpha 1(ITGA1) chain associates with the beta 1(ITGB1) chain to form a heterodimer that functions as a dual laminin/collagen receptor in neural cells and hematopoietic cells. ITGA1 has a 206-amino acid I domain in its N-terminal half, followed by 3 divalent cation-

Target Details

binding sites and a C-terminal transmembrane domain with a short cytoplasmic tail. It also has 28 potential N-glycosylation sites. Human ITGA1 was expressed in a mouse fibroblast cell line as a 180-kD protein. ITGA1 is involved in the early remodeling of osteoarthritic cartilage and plays an essential role in the regulation of mesenchymal stem cell proliferation and cartilage production. It also plays an essential role in the regulation of MSC proliferation and cartilage production.

UniProt: [P56199](#)

Pathways: [EGFR Signaling Pathway](#), [CXCR4-mediated Signaling Events](#), [Signaling of Hepatocyte Growth Factor Receptor](#), [Integrin Complex](#)

Application Details

Application Notes: The stated application concentrations are suggested starting amounts. Titration of the Integrin alpha 1 antibody may be required due to differences in protocols and secondary/substrate sensitivity.\. Western blot: 0.5-1 µg/mL,IHC (Paraffin): 0.5-1 µg/mL

Restrictions: For Research Use only

Handling

Buffer: 0.5 mg/mL if reconstituted with 0.2 mL sterile DI water

Storage: -20 °C

Storage Comment: After reconstitution, the Integrin alpha 1 antibody can be stored for up to one month at 4°C. For long-term, aliquot and store at -20°C. Avoid repeated freezing and thawing.

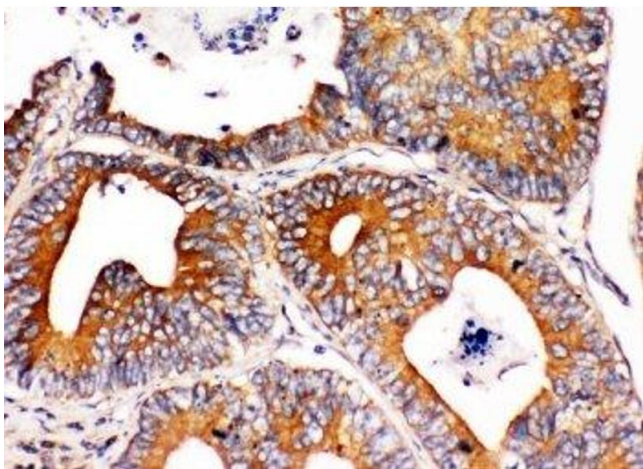
Publications

Product cited in: Bayer, Svensson, Schjerling, Williams, Wasserman, Kjaer: "Influence of the integrin alpha-1 subunit and its relationship with high-fat diet upon extracellular matrix synthesis in skeletal muscle and tendon." in: **Cell and tissue research**, Vol. 381, Issue 1, pp. 177-187, (2020) ([PubMed](#)).



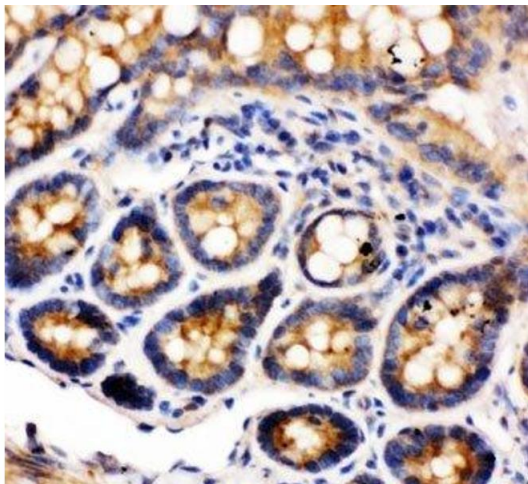
Western Blotting

Image 1. Western blot testing of Integrin alpha 1 antibody and Lane 1: rat brain



Immunohistochemistry

Image 2. IHC-P: Integrin alpha 1 antibody testing of human intestinal cancer tissue



Immunohistochemistry

Image 3. IHC-P: Integrin alpha 1 antibody testing of rat intestine tissue

Please check the [product details page](#) for more images. Overall 6 images are available for ABIN3031361.