

Datasheet for ABIN3031362
anti-ITGA2 antibody (AA 1152-1180)

3 Images

[Go to Product page](#)

Overview

Quantity:	0.4 mL
Target:	ITGA2
Binding Specificity:	AA 1152-1180
Reactivity:	Human, Mouse
Host:	Rabbit
Clonality:	Polyclonal
Conjugate:	This ITGA2 antibody is un-conjugated
Application:	Western Blotting (WB), ELISA

Product Details

Immunogen:	A portion of amino acids 1152-1180 from the human protein was used as the immunogen for this Integrin alpha 2 antibody.
Isotype:	Ig Fraction
Purification:	Antigen affinity purified

Target Details

Target:	ITGA2
Alternative Name:	Integrin alpha 2 (ITGA2 Products)
Background:	This gene product belongs to the integrin alpha chain family. Integrins are heterodimeric integral membrane glycoproteins composed of a distinct alpha chain and a common beta chain. They are found on a wide variety of cell types including, T cells, fibroblasts and platelets.

Target Details

Integrins are involved in cell adhesion and also participate in cell-surface mediated signalling.
[provided by RefSeq].

UniProt: [P17301](#)

Pathways: [CXCR4-mediated Signaling Events](#), [Smooth Muscle Cell Migration](#), [Integrin Complex](#)

Application Details

Application Notes: Titration of the Integrin alpha 2 antibody may be required due to differences in protocols and secondary/substrate sensitivity.\. Western blot: 1:1000

Restrictions: For Research Use only

Handling

Format: Liquid

Buffer: In 1X PBS, pH 7.4, with 0.09 % sodium azide

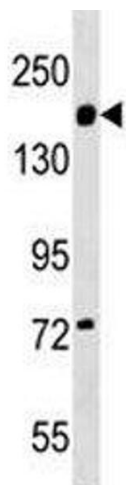
Preservative: Sodium azide

Precaution of Use: This product contains Sodium azide: a POISONOUS AND HAZARDOUS SUBSTANCE which should be handled by trained staff only.

Storage: -20 °C

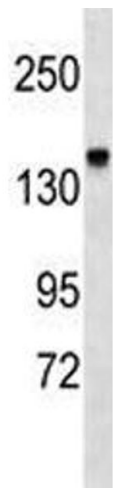
Storage Comment: Aliquot the Integrin alpha 2 antibody and store frozen at -20°C or colder. Avoid repeated freeze-thaw cycles.

Images



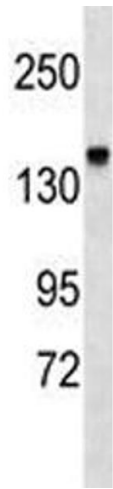
Western Blotting

Image 1. Integrin alpha 2 antibody western blot analysis in WiDr lysate.



Western Blotting

Image 2. Integrin alpha 2 antibody western blot analysis in mouse kidney tissue lysate



Western Blotting

Image 3. Integrin alpha 2 antibody western blot analysis in mouse kidney tissue lysate