

Datasheet for ABIN3031363
anti-ITGA2 antibody (AA 1023-1049)



[Go to Product page](#)

2 Images

Overview

Quantity:	0.4 mL
Target:	ITGA2
Binding Specificity:	AA 1023-1049
Reactivity:	Human
Host:	Rabbit
Clonality:	Polyclonal
Conjugate:	This ITGA2 antibody is un-conjugated
Application:	Western Blotting (WB), ELISA

Product Details

Immunogen:	A portion of amino acids 1023-1049 from the human protein was used as the immunogen for this Integrin alpha 2 antibody.
Isotype:	Ig Fraction
Purification:	Antigen affinity purified

Target Details

Target:	ITGA2
Alternative Name:	Integrin alpha 2 (ITGA2 Products)
Background:	ITGA2 is a protein that belongs to the integrin alpha chain family. Integrins are heterodimeric integral membrane glycoproteins composed of a distinct alpha chain and a common beta chain. They are found on a wide variety of cell types including, T cells, fibroblasts and platelets.

Target Details

	Integrins are involved in cell adhesion and also participate in cell-surface mediated signalling.
UniProt:	P17301
Pathways:	CXCR4-mediated Signaling Events, Smooth Muscle Cell Migration, Integrin Complex

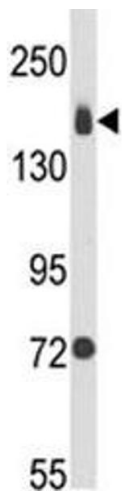
Application Details

Application Notes:	Titration of the Integrin alpha 2 antibody may be required due to differences in protocols and secondary/substrate sensitivity.\. Western blot: 1:1000
Restrictions:	For Research Use only

Handling

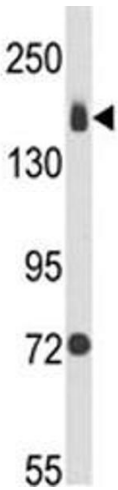
Format:	Liquid
Buffer:	In 1X PBS, pH 7.4, with 0.09 % sodium azide
Preservative:	Sodium azide
Precaution of Use:	This product contains Sodium azide: a POISONOUS AND HAZARDOUS SUBSTANCE which should be handled by trained staff only.
Storage:	-20 °C
Storage Comment:	Aliquot the Integrin alpha 2 antibody and store frozen at -20°C or colder. Avoid repeated freeze-thaw cycles.

Images



Western Blotting

Image 1. Western blot analysis of Integrin alpha 2 antibody and MDA-MB231 lysate



Western Blotting

Image 2. Western blot analysis of Integrin alpha 2 antibody and MDA-MB231 lysate