

Datasheet for ABIN3031369
anti-ITGAL antibody (AA 404-769)



[Go to Product page](#)

4 Images

Overview

Quantity:	100 µg
Target:	ITGAL
Binding Specificity:	AA 404-769
Reactivity:	Human
Host:	Rabbit
Clonality:	Polyclonal
Conjugate:	This ITGAL antibody is un-conjugated
Application:	Western Blotting (WB), Immunofluorescence (IF), Immunocytochemistry (ICC), Immunohistochemistry (Paraffin-embedded Sections) (IHC (p))

Product Details

Immunogen:	Human partial recombinant protein (AA 404-769) was used as the immunogen for this LFA-1 antibody.
Isotype:	IgG
Purification:	Antigen affinity

Target Details

Target:	ITGAL
Alternative Name:	LFA-1 (ITGAL Products)
Background:	Lymphocyte function associated antigen 1, also known as CD18, is a protein that in humans is encoded by the ITGB2 gene. It is an integrin protein that belongs to the class of cell membrane

Target Details

glycoproteins. The beta-2 integrin chain gene is designated ITGB2 and the leukocyte antigen has been designated LFA-1/CD18. The expression of LFA-1 is increased in lymphoblastoid cells from persons with Down syndrome, consistent with the location of the gene on chromosome 21. In humans lack of LFA-1 causes Leukocyte Adhesion Deficiency, a disease defined by a lack of leukocyte extravasation from blood into tissues. Although the protein is expressed on the cell surface at normal levels and is capable of function following extracellular stimulation, it could not be activated via the 'inside-out' signaling pathways.

Gene ID: 3689

Pathways: [Activated T Cell Proliferation, Integrin Complex](#)

Application Details

Application Notes: The stated application concentrations are suggested starting amounts. Titration of the LFA-1 antibody may be required due to differences in protocols and secondary/substrate sensitivity.\. Western blot: 0.5-1 µg/mL,IHC (Paraffin): 0.5-1 µg/mL,IF/ICC: 1-2 µg/mL

Restrictions: For Research Use only

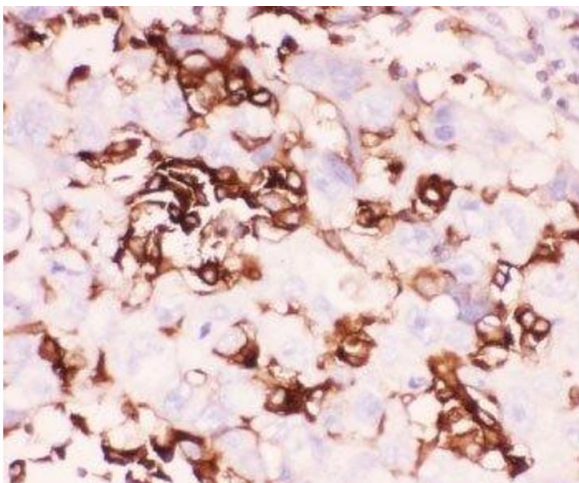
Handling

Buffer: 0.5 mg/mL if reconstituted with 0.2 mL sterile DI water

Storage: -20 °C

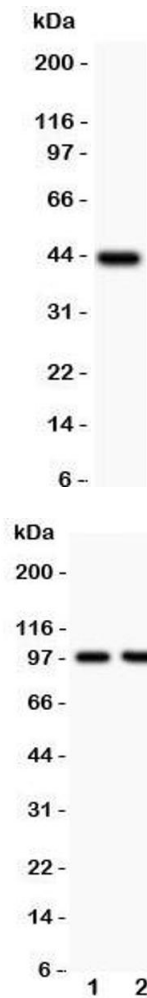
Storage Comment: After reconstitution, the LFA-1 antibody can be stored for up to one month at 4°C. For long-term, aliquot and store at -20°C. Avoid repeated freezing and thawing.

Images



Immunohistochemistry

Image 1. IHC-P: LFA-1 antibody testing of human lung cancer tissue



Western Blotting

Image 2. Western blot testing of LFA-1 antibody and recombinant human protein (0.5ng)

Western Blotting

Image 3. Western blot testing of LFA-1 antibody and Lane 1: Jurkat; 2: CEM; Predicted/Observed size: 85~95KD depending on glycosylation level

Please check the [product details page](#) for more images. Overall 4 images are available for ABIN3031369.