

Datasheet for ABIN3031385
anti-ILK antibody (AA 225-253)[Go to Product page](#)

5 Images

Overview

Quantity:	0.4 mL
Target:	ILK
Binding Specificity:	AA 225-253
Reactivity:	Human
Host:	Rabbit
Clonality:	Polyclonal
Conjugate:	This ILK antibody is un-conjugated
Application:	Western Blotting (WB), ELISA, Immunohistochemistry (IHC)

Product Details

Immunogen:	A portion of amino acids 225-253 from the human protein was used as the immunogen for this ILK antibody.
Isotype:	Ig Fraction
Cross-Reactivity (Details):	Expected species reactivity: Mouse, Rat, Bovine
Purification:	Antigen affinity purified

Target Details

Target:	ILK
Alternative Name:	ILK (ILK Products)
Background:	Transduction of extracellular matrix signals through integrins influences intracellular and

Target Details

extracellular functions, and appears to require interaction of integrin cytoplasmic domains with cellular proteins. Integrin-linked kinase (ILK), interacts with the cytoplasmic domain of beta-1 integrin. ILK is a serine/threonine protein kinase with 4 ankyrin-like repeats, which associates with the cytoplasmic domain of beta integrins and acts as a proximal receptor kinase regulating integrin-mediated signal transduction.

UniProt: [Q13418](#)

Pathways: [Regulation of Muscle Cell Differentiation](#), [Regulation of Cell Size](#), [Maintenance of Protein Location](#), [Skeletal Muscle Fiber Development](#), [Smooth Muscle Cell Migration](#)

Application Details

Application Notes: Titration of the ILK antibody may be required due to differences in protocols and secondary/substrate sensitivity.\. IHC (Paraffin): 1:50-1:100,Western blot: 1:1000

Restrictions: For Research Use only

Handling

Format: Liquid

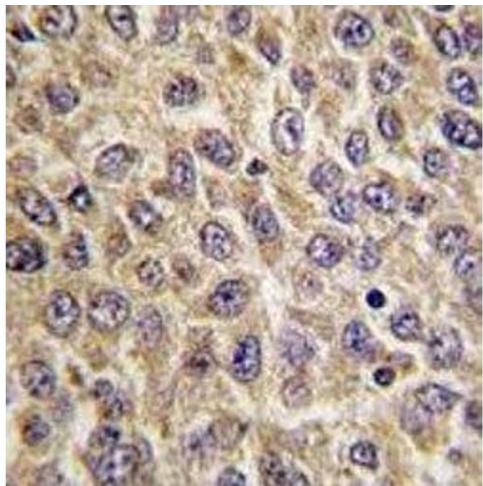
Buffer: In 1X PBS, pH 7.4, with 0.09 % sodium azide

Preservative: Sodium azide

Precaution of Use: This product contains Sodium azide: a POISONOUS AND HAZARDOUS SUBSTANCE which should be handled by trained staff only.

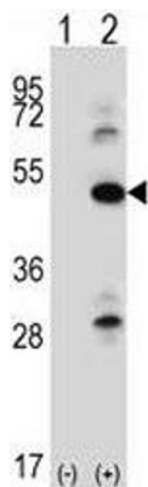
Storage: -20 °C

Storage Comment: Aliquot the ILK antibody and store frozen at -20°C or colder. Avoid repeated freeze-thaw cycles.



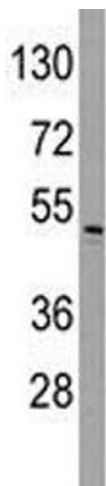
Immunohistochemistry

Image 1. IHC analysis of FFPE human hepatocarcinoma tissue stained with ILK antibody



Western Blotting

Image 2. Western blot analysis of ILK antibody and 293 cell lysate either nontransfected (Lane 1) or transiently transfected (2) with the ILK gene. Predicted molecular weight ~51 kDa.



Western Blotting

Image 3. Western blot analysis of ILK antibody and HeLa lysate. Predicted molecular weight ~51 kDa.

Please check the [product details page](#) for more images. Overall 5 images are available for ABIN3031385.