

Datasheet for ABIN3031392  
**anti-ILK antibody (AA 11-41)**

## 5 Images

[Go to Product page](#)

## Overview

Quantity:	0.4 mL
Target:	ILK
Binding Specificity:	AA 11-41
Reactivity:	Human
Host:	Rabbit
Clonality:	Polyclonal
Conjugate:	This ILK antibody is un-conjugated
Application:	Western Blotting (WB), ELISA, Immunohistochemistry (IHC)

## Product Details

Immunogen:	A portion of amino acids 11-41 from the mouse protein was used as the immunogen for this Integrin linked kinase antibody.
Isotype:	Ig Fraction
Cross-Reactivity (Details):	Expected species reactivity: Rat, Bovine
Purification:	Purified

## Target Details

Target:	ILK
Alternative Name:	Integrin Linked Kinase ( <a href="#">ILK Products</a> )
Background:	Transduction of extracellular matrix signals through integrins influences intracellular and

## Target Details

extracellular functions, and appears to require interaction of integrin cytoplasmic domains with cellular proteins. Integrin-linked kinase (ILK), interacts with the cytoplasmic domain of beta-1 integrin. ILK encodes a predicted 451-amino acid protein, with an apparent molecular weight of 59 kD. The ILK protein is a serine/threonine protein kinase with 4 ankyrin-like repeats. ILK regulates integrin-mediated signal transduction.

UniProt: [O55222](#)

Pathways: [Regulation of Muscle Cell Differentiation](#), [Regulation of Cell Size](#), [Maintenance of Protein Location](#), [Skeletal Muscle Fiber Development](#), [Smooth Muscle Cell Migration](#)

## Application Details

Application Notes: Titration of the Integrin linked kinase antibody may be required due to differences in protocols and secondary/substrate sensitivity.\. Western blot: 1:1000,IHC (Paraffin): 1:50-1:100

Restrictions: For Research Use only

## Handling

Format: Liquid

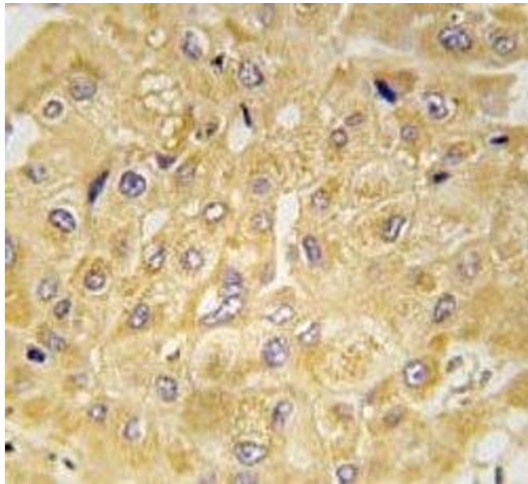
Buffer: In 1X PBS, pH 7.4, with 0.09 % sodium azide

Preservative: Sodium azide

Precaution of Use: This product contains Sodium azide: a POISONOUS AND HAZARDOUS SUBSTANCE which should be handled by trained staff only.

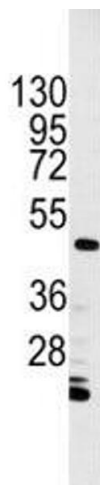
Storage: -20 °C

Storage Comment: Aliquot the Integrin linked kinase antibody and store frozen at -20°C or colder. Avoid repeated freeze-thaw cycles.



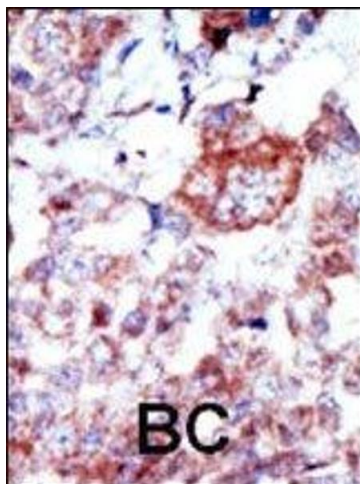
#### Immunohistochemistry

**Image 1.** IHC analysis of FFPE human hepatocarcinoma tissue stained with Integrin linked kinase antibody



#### Western Blotting

**Image 2.** Western blot analysis of Integrin linked kinase antibody and HL-60 cell lysate. Predicted molecular weight ~51 kDa.



**Image 3.**

Please check the [product details page](#) for more images. Overall 5 images are available for ABIN3031392.