

Datasheet for ABIN3031396
anti-ITGA5 antibody (AA 575-602)



[Go to Product page](#)

3 Images

Overview

Quantity:	0.4 mL
Target:	ITGA5
Binding Specificity:	AA 575-602
Reactivity:	Human
Host:	Rabbit
Clonality:	Polyclonal
Conjugate:	This ITGA5 antibody is un-conjugated
Application:	Western Blotting (WB), ELISA, Immunohistochemistry (IHC)

Product Details

Immunogen:	A portion of amino acids 575-602 from the human protein was used as the immunogen for this Integrin alpha 5 antibody.
Isotype:	Ig Fraction
Cross-Reactivity (Details):	Expected species reactivity: Mouse
Purification:	Antigen affinity purified

Target Details

Target:	ITGA5
Alternative Name:	Integrin alpha 5 (ITGA5 Products)
Background:	The product of this gene belongs to the integrin alpha chain family. Integrins are heterodimeric

Target Details

integral membrane proteins composed of an alpha chain and a beta chain. This gene encodes the integrin alpha 5 chain. Alpha chain 5 undergoes post-translational cleavage in the extracellular domain to yield disulfide-linked light and heavy chains that join with beta 1 to form a fibronectin receptor. In addition to adhesion, integrins are known to participate in cell-surface mediated signalling. [provided by RefSeq].

UniProt: [P08648](#)

Pathways: [Integrin Complex](#)

Application Details

Application Notes: Titration of the Integrin alpha 5 antibody may be required due to differences in protocols and secondary/substrate sensitivity.\. Western blot: 1:1000,IHC (Paraffin): 1:10-1:50

Restrictions: For Research Use only

Handling

Format: Liquid

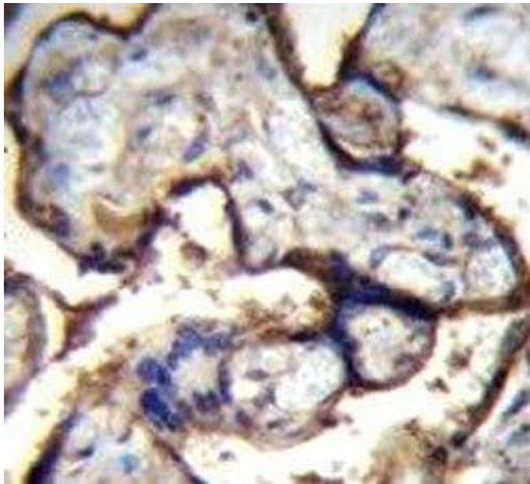
Buffer: In 1X PBS, pH 7.4, with 0.09 % sodium azide

Preservative: Sodium azide

Precaution of Use: This product contains Sodium azide: a POISONOUS AND HAZARDOUS SUBSTANCE which should be handled by trained staff only.

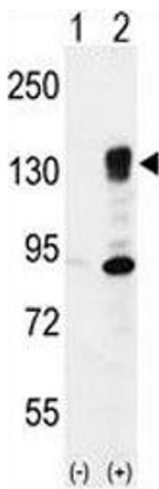
Storage: -20 °C

Storage Comment: Aliquot the Integrin alpha 5 antibody and store frozen at -20°C or colder. Avoid repeated freeze-thaw cycles.



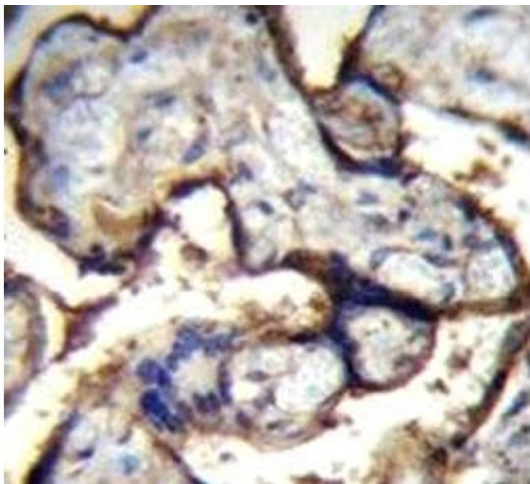
Immunohistochemistry

Image 1. Integrin alpha 5 antibody immunohistochemistry analysis in formalin fixed and paraffin embedded human placenta tissue



Western Blotting

Image 2. Western blot analysis of Integrin alpha 5 antibody and 293 cell lysate either nontransfected (Lane 1) or transiently transfected (2) with the ITGA5 gene.



Immunohistochemistry

Image 3. Integrin alpha 5 antibody immunohistochemistry analysis in formalin fixed and paraffin embedded human placenta tissue