

Datasheet for ABIN3031397  
**anti-ITGA5 antibody (AA 796-822)**



[Go to Product page](#)

**3** Images

## Overview

Quantity:	0.4 mL
Target:	ITGA5
Binding Specificity:	AA 796-822
Reactivity:	Human, Mouse
Host:	Rabbit
Clonality:	Polyclonal
Conjugate:	This ITGA5 antibody is un-conjugated
Application:	Western Blotting (WB), Flow Cytometry (FACS), ELISA

## Product Details

Immunogen:	A portion of amino acids 796-822 from the human protein was used as the immunogen for this Integrin alpha 5 antibody.
Isotype:	Ig Fraction
Purification:	Antigen affinity purified

## Target Details

Target:	ITGA5
Alternative Name:	Integrin alpha 5 ( <a href="#">ITGA5 Products</a> )
Background:	The product of this gene belongs to the integrin alpha chain family. Integrins are heterodimeric integral membrane proteins composed of an alpha chain and a beta chain. This gene encodes the integrin alpha 5 chain. Alpha chain 5 undergoes post-translational cleavage in the

Target Details

extracellular domain to yield disulfide-linked light and heavy chains that join with beta 1 to form a fibronectin receptor. In addition to adhesion, integrins are known to participate in cell-surface mediated signalling. [provided by RefSeq].

UniProt: [P08648](#)

Pathways: [Integrin Complex](#)

Application Details

Application Notes: Titration of the Integrin alpha 5 antibody may be required due to differences in protocols and secondary/substrate sensitivity.\. Western blot: 1:1000,Flow Cytometry: 1:10-1:50

Restrictions: For Research Use only

Handling

Format: Liquid

Buffer: In 1X PBS, pH 7.4, with 0.09 % sodium azide

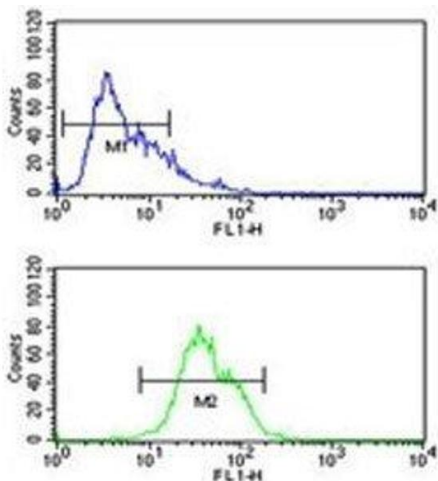
Preservative: Sodium azide

Precaution of Use: This product contains Sodium azide: a POISONOUS AND HAZARDOUS SUBSTANCE which should be handled by trained staff only.

Storage: -20 °C

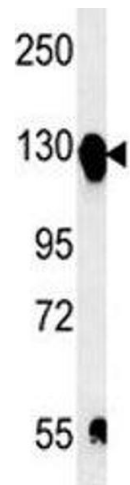
Storage Comment: Aliquot the Integrin alpha 5 antibody and store frozen at -20°C or colder. Avoid repeated freeze-thaw cycles.

Images



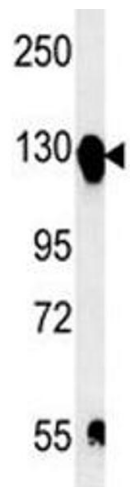
Flow Cytometry

**Image 1.** Integrin alpha 5 antibody flow cytometric analysis of CEM cells (green) compared to a negative control (blue). FITC-conjugated goat-anti-rabbit secondary Ab was used for the analysis.



**Western Blotting**

**Image 2.** Integrin alpha 5 antibody western blot analysis in mouse bladder tissue lysate.



**Western Blotting**

**Image 3.** Integrin alpha 5 antibody western blot analysis in mouse bladder tissue lysate.