



[Go to Product page](#)

Datasheet for ABIN3031400
anti-ITGA7 antibody (AA 229-257)

2 Images

Overview

Quantity:	0.4 mL
Target:	ITGA7
Binding Specificity:	AA 229-257
Reactivity:	Human
Host:	Rabbit
Clonality:	Polyclonal
Conjugate:	This ITGA7 antibody is un-conjugated
Application:	Western Blotting (WB), ELISA

Product Details

Immunogen:	A portion of amino acids 229-257 from the human protein was used as the immunogen for this Integrin alpha 7 antibody.
Isotype:	Ig Fraction
Cross-Reactivity (Details):	Expected species reactivity: Mouse
Purification:	Antigen affinity purified

Target Details

Target:	ITGA7
Alternative Name:	Integrin alpha 7 (ITGA7 Products)
Background:	The protein encoded by this gene belongs to the integrin alpha chain family. Integrins are

Target Details

heterodimeric integral membrane proteins composed of an alpha chain and a beta chain. They mediate a wide spectrum of cell-cell and cell-matrix interactions, and thus play a role in cell migration, morphologic development, differentiation, and metastasis. This protein functions as a receptor for the basement membrane protein laminin-1. It is mainly expressed in skeletal and cardiac muscles and may be involved in differentiation and migration processes during myogenesis. Defects in this gene are associated with congenital myopathy. Alternatively spliced transcript variants encoding different isoforms have been noted for this gene.

UniProt: [Q13683](#)

Pathways: [Integrin Complex](#)

Application Details

Application Notes: Titration of the Integrin alpha 7 antibody may be required due to differences in protocols and secondary/substrate sensitivity.\. Western blot: 1:1000

Restrictions: For Research Use only

Handling

Format: Liquid

Buffer: In 1X PBS, pH 7.4, with 0.09 % sodium azide

Preservative: Sodium azide

Precaution of Use: This product contains Sodium azide: a POISONOUS AND HAZARDOUS SUBSTANCE which should be handled by trained staff only.

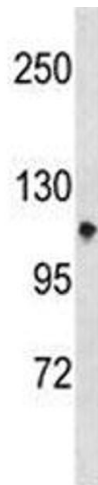
Storage: -20 °C

Storage Comment: Aliquot the Integrin alpha 7 antibody and store frozen at -20°C or colder. Avoid repeated freeze-thaw cycles.



Western Blotting

Image 1. Integrin alpha 7 antibody western blot analysis in CEM lysate.



Western Blotting

Image 2. Integrin alpha 7 antibody western blot analysis in CEM lysate.