

Datasheet for ABIN3031401
anti-ITGA7 antibody (C-Term)[Go to Product page](#)

2 Images

Overview

Quantity:	0.4 mL
Target:	ITGA7
Binding Specificity:	C-Term
Reactivity:	Human
Host:	Rabbit
Clonality:	Polyclonal
Conjugate:	This ITGA7 antibody is un-conjugated
Application:	Western Blotting (WB), ELISA

Product Details

Immunogen:	This Integrin alpha 7 antibody was produced from a rabbit immunized with a KLH conjugated synthetic peptide between 1149-1181 amino acids from the C-terminal region of human ITGA7.
Isotype:	Ig Fraction
Purification:	Antigen affinity purified

Target Details

Target:	ITGA7
Alternative Name:	Integrin alpha 7 (ITGA7 Products)
Background:	Integrin alpha-7/beta-1 is the primary laminin receptor on skeletal myoblasts and adult myofibers. During myogenic differentiation, it may induce changes in the shape and mobility of myoblasts, and facilitate their localization at laminin-rich sites of secondary fiber formation. It is

Target Details

involved in the maintenance of the myofibers cytoarchitecture as well as for their anchorage, viability and functional integrity. Isoform Alpha-7X2B and isoform Alpha-7X1B promote myoblast migration on laminin 1 and laminin 2/4, but isoform Alpha-7X1B is less active on laminin 1 (In vitro). Acts as Schwann cell receptor for laminin-2. Acts as a receptor of COMP and mediates its effect on vascular smooth muscle cells (VSMCs) maturation (By similarity). Required to promote contractile phenotype acquisition in differentiated airway smooth muscle (ASM) cells.

UniProt: [Q13683](#)

Pathways: [Integrin Complex](#)

Application Details

Application Notes: Titration of the Integrin alpha 7 antibody may be required due to differences in protocols and secondary/substrate sensitivity.\. Western blot: 1:2000-8000

Restrictions: For Research Use only

Handling

Format: Liquid

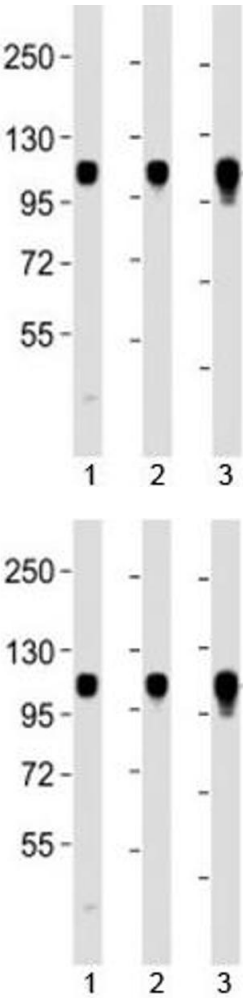
Buffer: In 1X PBS, pH 7.4, with 0.09 % sodium azide

Preservative: Sodium azide

Precaution of Use: This product contains Sodium azide: a POISONOUS AND HAZARDOUS SUBSTANCE which should be handled by trained staff only.

Storage: -20 °C

Storage Comment: Aliquot the Integrin alpha 7 antibody and store frozen at -20°C or colder. Avoid repeated freeze-thaw cycles.



Western Blotting

Image 1. Western blot testing of Integrin alpha 7 antibody at 1:2000 dilution. Lane 1: HeLa lysate; 2: Jurkat lysate; 3: Raji lysate

Western Blotting

Image 2. Western blot testing of Integrin alpha 7 antibody at 1:2000 dilution. Lane 1: HeLa lysate