



[Go to Product page](#)

Datasheet for ABIN3031402
anti-ITGA7 antibody (C-Term)

2 Images

Overview

Quantity:	100 µg
Target:	ITGA7
Binding Specificity:	C-Term
Reactivity:	Human, Mouse, Rat
Host:	Rabbit
Clonality:	Polyclonal
Conjugate:	This ITGA7 antibody is un-conjugated
Application:	Western Blotting (WB)

Product Details

Immunogen:	An amino acid sequence from the C-terminus of human ITGA7 (HAVKIPREDRQQFKEEK) was used as the immunogen for this Integrin alpha 7 antibody (100% mouse homology).
Isotype:	IgG
Purification:	Antigen affinity

Target Details

Target:	ITGA7
Alternative Name:	Integrin alpha 7 (ITGA7) (ITGA7 Products)
Background:	Integrin alpha 7 is a protein that in humans is encoded by the ITGA7 gene. This gene is mapped to 12q13.2. Integrins mediate a wide spectrum of cell-cell and cell-matrix interactions, and thus play a role in cell migration, morphologic development, differentiation, and metastasis. This

Target Details

protein functions as a receptor for the basement membrane protein laminin-1. It is mainly expressed in skeletal and cardiac muscles and may be involved in differentiation and migration processes during myogenesis. Defects in this gene are associated with congenital myopathy.

UniProt: [Q13683](#)

Pathways: [Integrin Complex](#)

Application Details

Application Notes: The stated application concentrations are suggested starting amounts. Titration of the Integrin alpha 7 antibody may be required due to differences in protocols and secondary/substrate sensitivity.\. Western blot: 0.5-1 µg/mL

Restrictions: For Research Use only

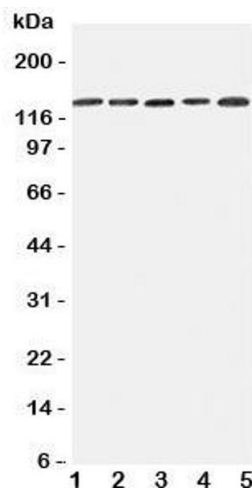
Handling

Buffer: 0.5 mg/mL if reconstituted with 0.2 mL sterile DI water

Storage: -20 °C

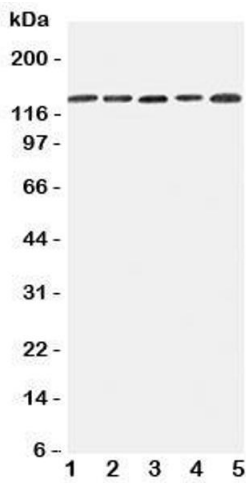
Storage Comment: After reconstitution, the Integrin alpha 7 antibody can be stored for up to one month at 4°C. For long-term, aliquot and store at -20°C. Avoid repeated freezing and thawing.

Images



Western Blotting

Image 1. Western blot testing of Integrin alpha 7 antibody and Lane 1: 293T; 2: A431; 3: HeLa; 4: Jurkat; 5: Raji cell lysate. Expected/observed size ~129KD



Western Blotting

Image 2. Western blot testing of Integrin alpha 7 antibody and Lane 1: 293T