

Datasheet for ABIN3031404
anti-CD11c antibody (AA 1119-1145)

6 Images

[Go to Product page](#)

Overview

Quantity:	0.4 mL
Target:	CD11c (ITGAX)
Binding Specificity:	AA 1119-1145
Reactivity:	Human
Host:	Rabbit
Clonality:	Polyclonal
Conjugate:	This CD11c antibody is un-conjugated
Application:	Flow Cytometry (FACS), Immunohistochemistry (IHC), Immunofluorescence (IF), Western Blotting (WB), ELISA

Product Details

Immunogen:	A portion of amino acids 1119-1145 from the human protein was used as the immunogen for this CD11c antibody.
Isotype:	Ig Fraction
Purification:	Antigen affinity purified

Target Details

Target:	CD11c (ITGAX)
Alternative Name:	CD11c (ITGAX Products)
Background:	ITGAX is the integrin alpha X chain protein. Integrins are heterodimeric integral membrane proteins composed of an alpha chain and a beta chain. This protein combines with the beta 2

Target Details

chain (ITGB2) to form a leukocyte-specific integrin referred to as inactivated-C3b (iC3b) receptor 4 (CR4). The alpha X beta 2 complex seems to overlap the properties of the alpha M beta 2 integrin in the adherence of neutrophils and monocytes to stimulated endothelium cells, and in the phagocytosis of complement coated particles.

UniProt: [P20702](#)

Pathways: [Complement System](#), [Activated T Cell Proliferation](#), [Integrin Complex](#)

Application Details

Application Notes: Titration of the CD11c antibody may be required due to differences in protocols and secondary/substrate sensitivity.\. Western blot: 1:1000,IHC (Paraffin): 1:50-1:100,Flow Cytometry: 1:10-1:50,Immunofluorescence: 1:10-1:50

Restrictions: For Research Use only

Handling

Format: Liquid

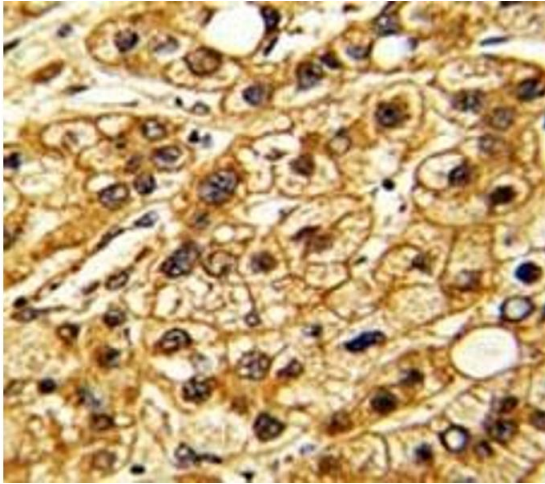
Buffer: In 1X PBS pH 7.4 with 0.09 % sodium azide

Preservative: Sodium azide

Precaution of Use: This product contains Sodium azide: a POISONOUS AND HAZARDOUS SUBSTANCE which should be handled by trained staff only.

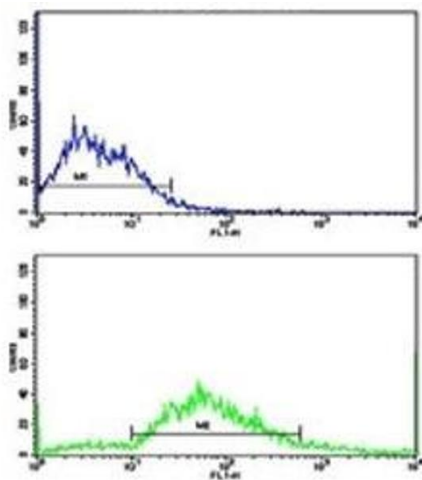
Storage: -20 °C

Storage Comment: Aliquot the CD11c antibody and store frozen at -20°C or colder. Avoid repeated freeze-thaw cycles.



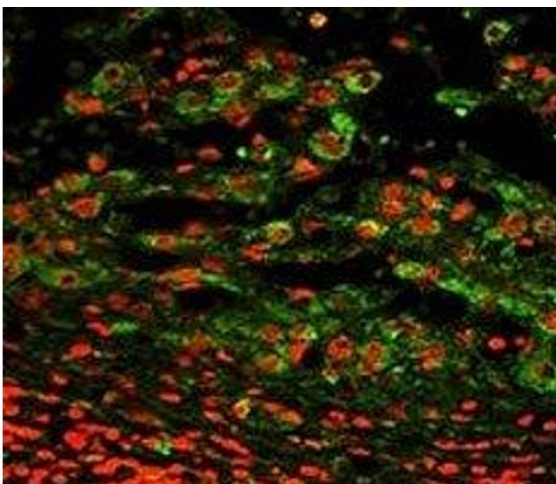
Immunohistochemistry

Image 1. IHC analysis of FFPE human hepatocarcinoma stained with CD11c antibody



Flow Cytometry

Image 2. Flow cytometric analysis of SK-Br-3 cells using CD11c antibody (bottom histogram) compared to a negative control (top histogram). FITC-conjugated goat-anti-rabbit secondary Ab was used for the analysis.



Immunofluorescence

Image 3. Immunofluorescence analysis of CD11c antibody with paraffin-embedded human hepatocarcinoma. Primary Ab was followed by FITC-conjugated goat anti-rabbit IgG. FITC emits green fluorescence. Red counterstaining is PI.

Please check the [product details page](#) for more images. Overall 6 images are available for ABIN3031404.