

Datasheet for ABIN3031407
anti-ICAM2 antibody (AA 191-218)

3 Images

[Go to Product page](#)

Overview

Quantity:	0.4 mL
Target:	ICAM2
Binding Specificity:	AA 191-218
Reactivity:	Human
Host:	Rabbit
Clonality:	Polyclonal
Conjugate:	This ICAM2 antibody is un-conjugated
Application:	Western Blotting (WB), Flow Cytometry (FACS), ELISA

Product Details

Immunogen:	A portion of amino acids 191-218 from the human protein was used as the immunogen for this ICAM2 antibody.
Isotype:	Ig Fraction
Purification:	Antigen affinity purified

Target Details

Target:	ICAM2
Alternative Name:	ICAM2 (ICAM2 Products)
Background:	The protein encoded by this gene is a member of the intercellular adhesion molecule (ICAM) family. All ICAM proteins are type I transmembrane glycoproteins, contain 2-9 immunoglobulin-like C2-type domains, and bind to the leukocyte adhesion LFA-1 protein. This protein may play a

Target Details

role in lymphocyte recirculation by blocking LFA-1-dependent cell adhesion. It mediates adhesive interactions important for antigen-specific immune response, NK-cell mediated clearance, lymphocyte recirculation, and other cellular interactions important for immune response and surveillance. Several transcript variants encoding the same protein have been found for this gene.

UniProt: [P13598](#)

Application Details

Application Notes: Titration of the ICAM2 antibody may be required due to differences in protocols and secondary/substrate sensitivity.\. Western blot: 1:1000,Flow Cytometry: 1:10-1:50

Restrictions: For Research Use only

Handling

Format: Liquid

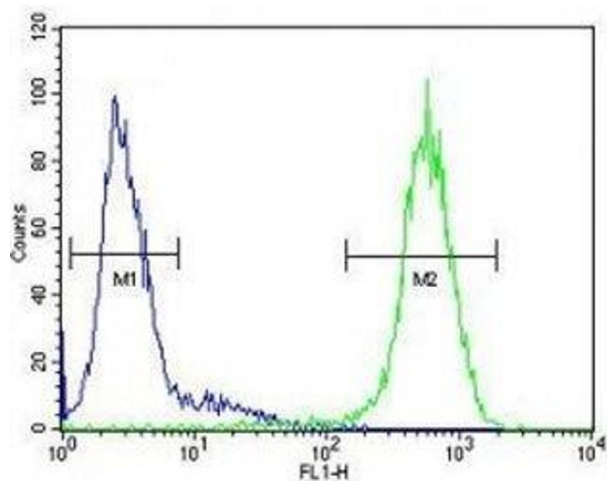
Buffer: In 1X PBS pH 7.4 with 0.09 % sodium azide

Preservative: Sodium azide

Precaution of Use: This product contains Sodium azide: a POISONOUS AND HAZARDOUS SUBSTANCE which should be handled by trained staff only.

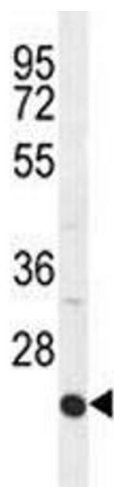
Storage: -20 °C

Storage Comment: Aliquot the ICAM2 antibody and store frozen at -20°C or colder. Avoid repeated freeze-thaw cycles.



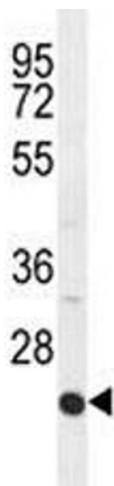
Flow Cytometry

Image 1. ICAM2 antibody flow cytometric analysis of HepG2 cells (right histogram) compared to a negative control (left histogram). FITC-conjugated goat-anti-rabbit secondary Ab was used for the analysis.



Western Blotting

Image 2. ICAM2 antibody western blot analysis in HepG2 lysate.



Western Blotting

Image 3. ICAM2 antibody western blot analysis in HepG2 lysate.