

Datasheet for ABIN3031420
anti-IRF4 antibody (AA 164-191)



[Go to Product page](#)

3 Images

Overview

Quantity:	0.4 mL
Target:	IRF4
Binding Specificity:	AA 164-191
Reactivity:	Human
Host:	Rabbit
Clonality:	Polyclonal
Conjugate:	This IRF4 antibody is un-conjugated
Application:	Western Blotting (WB), ELISA, Flow Cytometry (FACS)

Product Details

Immunogen:	A portion of amino acids 164-191 from the human protein was used as the immunogen for this IRF4 antibody.
Isotype:	Ig Fraction
Purification:	Purified

Target Details

Target:	IRF4
Alternative Name:	IRF4 (IRF4 Products)
Background:	The protein encoded by this gene belongs to the IRF (interferon regulatory factor) family of transcription factors, characterized by an unique tryptophan pentad repeat DNA-binding domain. The IRFs are important in the regulation of interferons in response to infection by virus,

Target Details

and in the regulation of interferon-inducible genes. This family member is lymphocyte specific and negatively regulates Toll-like-receptor (TLR) signaling that is central to the activation of innate and adaptive immune systems. A chromosomal translocation involving this gene and the IgH locus, t(6,14)(p25,q32), may be a cause of multiple myeloma. Alternatively spliced transcript variants have been found for this gene.

UniProt: [Q15306](#)

Pathways: [Chromatin Binding](#)

Application Details

Application Notes: Titration of the IRF4 antibody may be required due to differences in protocols and secondary/substrate sensitivity.\. Western blot: 1:1000,Flow Cytometry: 1:10-1:50

Restrictions: For Research Use only

Handling

Format: Liquid

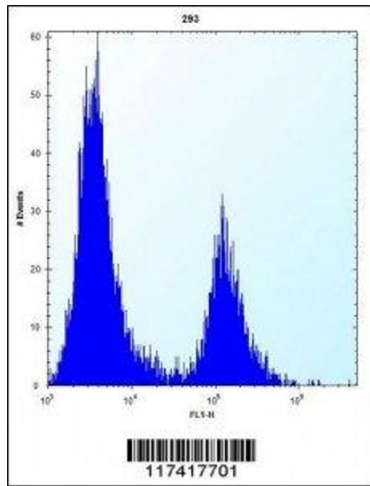
Buffer: In 1X PBS pH 7.4 with 0.09 % sodium azide

Preservative: Sodium azide

Precaution of Use: This product contains Sodium azide: a POISONOUS AND HAZARDOUS SUBSTANCE which should be handled by trained staff only.

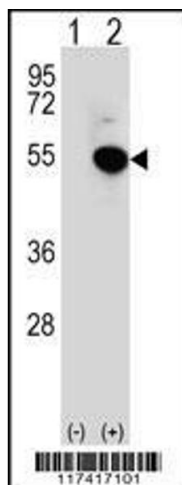
Storage: -20 °C

Storage Comment: Aliquot the IRF4 antibody and store frozen at -20°C or colder. Avoid repeated freeze-thaw cycles.



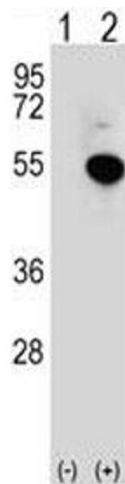
Flow Cytometry

Image 1. IRF4 antibody flow cytometric analysis of 293 cells (right histogram) compared to a negative control (left histogram). FITC-conjugated goat-anti-rabbit secondary Ab was used for the analysis.



Western Blotting

Image 2. Western blot analysis of IRF4 antibody and 293 cell lysate (2 ug/lane) either nontransfected (Lane 1) or transiently transfected (2) with the IRF4 gene.



Western Blotting

Image 3. Western blot analysis of IRF4 antibody and 293 cell lysate (2 ug/lane) either nontransfected (Lane 1) or transiently transfected (2) with the IRF4 gene.