

Datasheet for ABIN3031422  
**anti-IRF5 antibody (AA 81-108)**[Go to Product page](#)

## 5 Images

## Overview

Quantity:	0.4 mL
Target:	IRF5
Binding Specificity:	AA 81-108
Reactivity:	Human
Host:	Rabbit
Clonality:	Polyclonal
Conjugate:	This IRF5 antibody is un-conjugated
Application:	Western Blotting (WB), ELISA, Immunofluorescence (IF), Flow Cytometry (FACS)

## Product Details

Immunogen:	A portion of amino acids 81-108 from the human protein was used as the immunogen for this IRF5 antibody.
Isotype:	Ig Fraction
Cross-Reactivity (Details):	Expected species reactivity: Bovine
Purification:	Purified

## Target Details

Target:	IRF5
Alternative Name:	IRF5 ( <a href="#">IRF5 Products</a> )
Background:	IRF5 is a member of the interferon regulatory factor (IRF) family, a group of transcription

## Target Details

factors with diverse roles, including virus-mediated activation of interferon, and modulation of cell growth, differentiation, apoptosis, and immune system activity. Members of the IRF family are characterized by a conserved N-terminal DNA-binding domain containing tryptophan (W) repeats.

UniProt: [Q13568](#)

Pathways: [TLR Signaling](#), [Autophagy](#)

## Application Details

Application Notes: Titration of the IRF5 antibody may be required due to differences in protocols and secondary/substrate sensitivity.\. Western blot: 1:1000,Immunofluorescence: 1:10-1:50,Flow Cytometry: 1:10-1:50

Restrictions: For Research Use only

## Handling

Format: Liquid

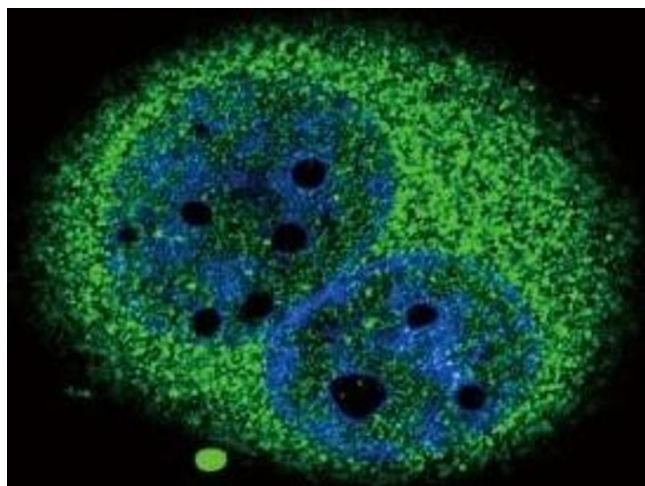
Buffer: In 1X PBS, pH 7.4, with 0.09 % sodium azide

Preservative: Sodium azide

Precaution of Use: This product contains Sodium azide: a POISONOUS AND HAZARDOUS SUBSTANCE which should be handled by trained staff only.

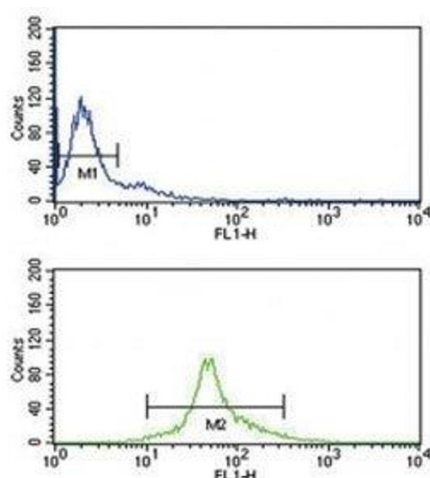
Storage: -20 °C

Storage Comment: Aliquot the IRF5 antibody and store frozen at -20°C or colder. Avoid repeated freeze-thaw cycles.



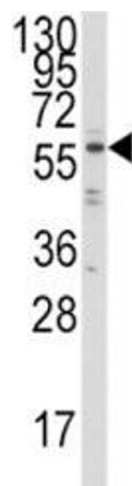
### Immunofluorescence

**Image 1.** Confocal immunofluorescent analysis of IRF5 antibody with A549 cells followed by Alexa Fluor 488-conjugated goat anti-rabbit IgG (green). DAPI was used as a nuclear counterstain (blue).



### Flow Cytometry

**Image 2.** IRF5 antibody flow cytometry analysis of Ramos cells (green) compared to a negative control (blue). FITC-conjugated goat-anti-rabbit secondary Ab was used for the analysis.



### Western Blotting

**Image 3.** Western blot analysis of IRF5 antibody and Ramos lysate.

Please check the [product details page](#) for more images. Overall 5 images are available for ABIN3031422.