



[Go to Product page](#)

Datasheet for ABIN3031424

anti-IRF8 antibody (AA 384-409)

3 Images

Overview

Quantity:	0.4 mL
Target:	IRF8
Binding Specificity:	AA 384-409
Reactivity:	Human
Host:	Rabbit
Clonality:	Polyclonal
Conjugate:	This IRF8 antibody is un-conjugated
Application:	Western Blotting (WB), ELISA, Flow Cytometry (FACS)

Product Details

Immunogen:	A portion of amino acids 384-409 from the human protein was used as the immunogen for this IRF8 antibody.
Isotype:	Ig Fraction
Purification:	Purified

Target Details

Target:	IRF8
Alternative Name:	IRF8 (IRF8 Products)
Background:	Interferon consensus sequence-binding protein (ICSBP) is a transcription factor of the interferon (IFN) regulatory factor (IRF) family. Proteins of this family are composed of a conserved DNA-binding domain in the N-terminal region and a divergent C-terminal region that

Target Details

serves as the regulatory domain. The IRF family proteins bind to the IFN-stimulated response element (ISRE) and regulate expression of genes stimulated by type I IFNs, namely IFN-alpha and IFN-beta. IRF family proteins also control expression of IFN-alpha and IFN-beta-regulated genes that are induced by viral infection.

UniProt: [Q02556](#)

Pathways: [Cellular Response to Molecule of Bacterial Origin](#)

Application Details

Application Notes: Titration of the IRF8 antibody may be required due to differences in protocols and secondary/substrate sensitivity.\. Western blot: 1:1000,Flow Cytometry: 1:10-1:50

Restrictions: For Research Use only

Handling

Format: Liquid

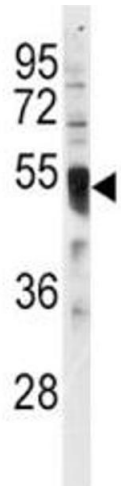
Buffer: In 1X PBS, pH 7.4, with 0.09 % sodium azide

Preservative: Sodium azide

Precaution of Use: This product contains Sodium azide: a POISONOUS AND HAZARDOUS SUBSTANCE which should be handled by trained staff only.

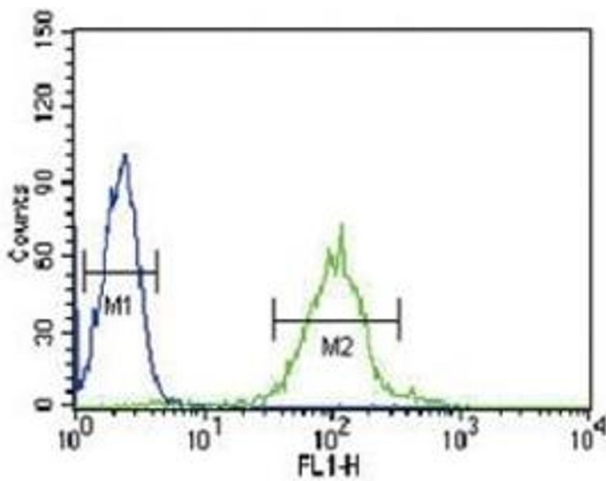
Storage: -20 °C

Storage Comment: Aliquot the IRF8 antibody and store frozen at -20°C or colder. Avoid repeated freeze-thaw cycles.



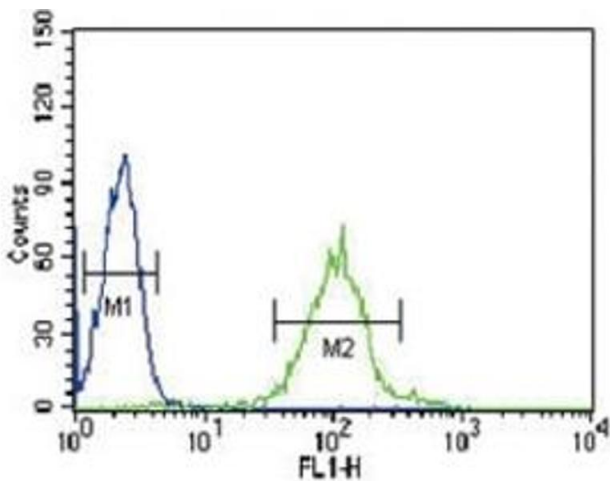
Western Blotting

Image 1. Western blot analysis of IRF8 antibody and HL-60 lysate.



Flow Cytometry

Image 2. IRF8 antibody flow cytometric analysis of HL-60 cells (green) compared to a negative control (blue). FITC-conjugated goat-anti-rabbit secondary Ab was used for the analysis.



Flow Cytometry

Image 3. IRF8 antibody flow cytometric analysis of HL-60 cells (green) compared to a [negative control](#) (blue). FITC-conjugated goat-anti-rabbit secondary Ab was used for the analysis.