

Datasheet for ABIN3031430
anti-IL1R1 antibody (AA 422-450)[Go to Product page](#)

3 Images

Overview

Quantity:	0.4 mL
Target:	IL1R1
Binding Specificity:	AA 422-450
Reactivity:	Human, Mouse
Host:	Rabbit
Clonality:	Polyclonal
Application:	Western Blotting (WB), ELISA

Product Details

Immunogen:	A portion of amino acids 422-450 from the human protein was used as the immunogen for this IL1R1 antibody.
Isotype:	Ig Fraction
Purification:	Antigen affinity purified

Target Details

Target:	IL1R1
Alternative Name:	IL-1 Receptor type 1 (IL1R1 Products)
Background:	The protein encoded by this gene is a cytokine receptor that belongs to the interleukin 1 receptor family. This protein is a receptor for interleukin alpha (IL1A), interleukin beta (IL1B), and interleukin 1 receptor, type I (IL1R1/IL1RA). It is an important mediator involved in many cytokine induced immune and inflammatory responses. This gene along with interleukin 1

Target Details

receptor, type II (IL1R2), interleukin 1 receptor-like 2 (IL1RL2), and interleukin 1 receptor-like 1 (IL1RL1) form a cytokine receptor gene cluster in a region mapped to chromosome 2q12.

UniProt: [P14778](#)

Pathways: [NF-kappaB Signaling](#), [Carbohydrate Homeostasis](#), [Cancer Immune Checkpoints](#)

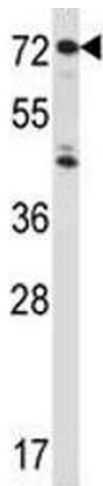
Application Details

Application Notes:	Titration of the IL1R1 antibody may be required due to differences in protocols and secondary/substrate sensitivity.\. Western blot: 1:1000
Restrictions:	For Research Use only

Handling

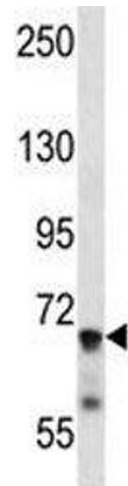
Format:	Liquid
Buffer:	In 1X PBS, pH 7.4, with 0.09 % sodium azide
Preservative:	Sodium azide
Precaution of Use:	This product contains Sodium azide: a POISONOUS AND HAZARDOUS SUBSTANCE which should be handled by trained staff only.
Storage:	-20 °C
Storage Comment:	Aliquot the IL1R1 antibody and store frozen at -20°C or colder. Avoid repeated freeze-thaw cycles.

Images



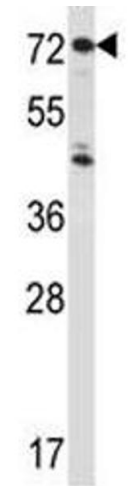
Western Blotting

Image 1. IL1R1 antibody western blot analysis in HepG2 lysate.



Western Blotting

Image 2. IL1R1 antibody western blot analysis in mouse liver tissue lysate



Western Blotting

Image 3. IL1R1 antibody western blot analysis in HepG2 lysate.