

Datasheet for ABIN3031431
anti-IL1R1 antibody (AA 474-503)

5 Images

[Go to Product page](#)

Overview

Quantity:	0.4 mL
Target:	IL1R1
Binding Specificity:	AA 474-503
Reactivity:	Human
Host:	Rabbit
Clonality:	Polyclonal
Application:	Western Blotting (WB), ELISA, Immunohistochemistry (IHC)

Product Details

Immunogen:	A portion of amino acids 474-503 from human IL-1 Receptor type 1 was used as the immunogen for this IL1R1 antibody.
Isotype:	Ig Fraction
Cross-Reactivity (Details):	Expected species reactivity: Rat
Purification:	Antigen affinity purified

Target Details

Target:	IL1R1
Alternative Name:	IL-1 Receptor type 1 (IL1R1 Products)
Background:	IL1R is a member of the interleukin 1 receptor family. An experiment with transient gene expression demonstrated that this receptor was incapable of binding to interleukin 1 alpha and interleukin 1 beta with high affinity. IL1R is a receptor for interleukin 1 family member 9 (IL1F9).

Target Details

Binding to the agonist leads to the activation of NF-kappa-B. The gene for this protein and four other interleukin 1 receptor family genes, including interleukin 1 receptor, type I (IL1R1), interleukin 1 receptor, type II (IL1R2), interleukin 1 receptor-like 1 (IL1RL1), and interleukin 18 receptor 1 (IL18R1), form a cytokine receptor gene cluster in a region mapped to chromosome 2q12.

UniProt: [P14778](#)

Pathways: [NF-kappaB Signaling](#), [Carbohydrate Homeostasis](#), [Cancer Immune Checkpoints](#)

Application Details

Application Notes: Titration of the IL1R1 antibody may be required due to differences in protocols and secondary/substrate sensitivity.\. Western blot: 1:1000,IHC (Paraffin): 1:10-1:50

Restrictions: For Research Use only

Handling

Format: Liquid

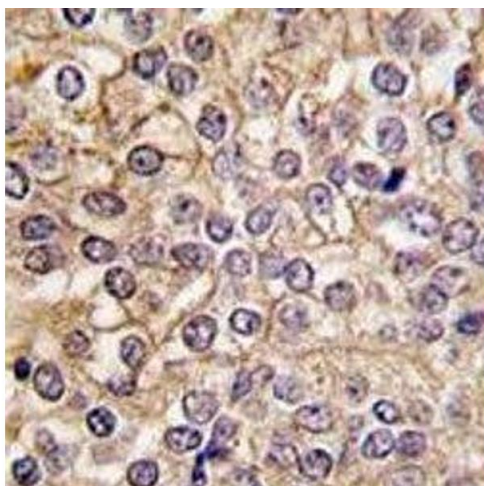
Buffer: In 1X PBS, pH 7.4, with 0.09 % sodium azide

Preservative: Sodium azide

Precaution of Use: This product contains Sodium azide: a POISONOUS AND HAZARDOUS SUBSTANCE which should be handled by trained staff only.

Storage: -20 °C

Storage Comment: Aliquot the IL1R1 antibody and store frozen at -20°C or colder. Avoid repeated freeze-thaw cycles.



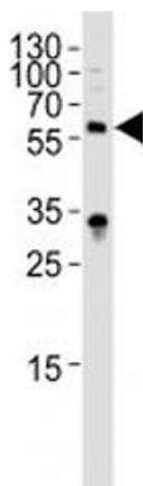
Immunohistochemistry

Image 1. IHC analysis of FFPE human prostate carcinoma tissue stained with IL1R1 antibody



Western Blotting

Image 2. Western blot analysis of IL1R1 antibody and HL-60 lysate. Predicted molecular weight 60-65 kDa.



Western Blotting

Image 3. Western blot analysis of lysate from HepG2 cell line using IL1R1 antibody diluted at 1:1000. Predicted molecular weight 60-65 kDa.

Please check the [product details page](#) for more images. Overall 5 images are available for ABIN3031431.