

Datasheet for ABIN3031432
anti-IL1R2 antibody (AA 273-300)[Go to Product page](#)

2 Images

Overview

Quantity:	0.4 mL
Target:	IL1R2
Binding Specificity:	AA 273-300
Reactivity:	Human
Host:	Rabbit
Clonality:	Polyclonal
Conjugate:	This IL1R2 antibody is un-conjugated
Application:	Western Blotting (WB), ELISA

Product Details

Immunogen:	A portion of amino acids 273-300 from the human protein was used as the immunogen for this IL1R2 antibody.
Isotype:	Ig Fraction
Purification:	Antigen affinity purified

Target Details

Target:	IL1R2
Alternative Name:	IL1R2 (IL1R2 Products)
Background:	The protein encoded by this gene is a cytokine receptor that belongs to the interleukin 1 receptor family. This protein binds interleukin alpha (IL1A), interleukin beta (IL1B), and interleukin 1 receptor, type I (IL1R1/IL1RA), and acts as a decoy receptor that inhibits the activity

Target Details

of its ligands. Interleukin 4 (IL4) is reported to antagonize the activity of interleukin 1 by inducing the expression and release of this cytokine. This gene and three other genes form a cytokine receptor gene cluster on chromosome 2q12. Two alternatively spliced transcript variants encoding the same protein have been reported.

UniProt: [P27930](#)

Pathways: [NF-kappaB Signaling](#)

Application Details

Application Notes: Titration of the IL1R2 antibody may be required due to differences in protocols and secondary/substrate sensitivity.\. Western blot: 1:1000

Restrictions: For Research Use only

Handling

Format: Liquid

Buffer: In 1X PBS, pH 7.4, with 0.09 % sodium azide

Preservative: Sodium azide

Precaution of Use: This product contains Sodium azide: a POISONOUS AND HAZARDOUS SUBSTANCE which should be handled by trained staff only.

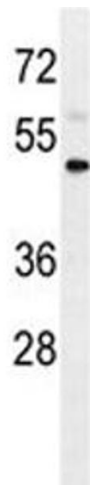
Storage: -20 °C

Storage Comment: Aliquot the IL1R2 antibody and store frozen at -20°C or colder. Avoid repeated freeze-thaw cycles.



Western Blotting

Image 1. IL1R2 antibody western blot analysis in WiDr lysate. Predicted molecular weight ~ 45 kDa.



Western Blotting

Image 2. IL1R2 antibody western blot analysis in WiDr lysate. Predicted molecular weight ~ 45 kDa.