

Datasheet for ABIN3031433  
**anti-IL1A antibody (AA 177-206)**

## 5 Images

[Go to Product page](#)

## Overview

Quantity:	0.4 mL
Target:	IL1A
Binding Specificity:	AA 177-206
Reactivity:	Human
Host:	Rabbit
Clonality:	Polyclonal
Conjugate:	This IL1A antibody is un-conjugated
Application:	Western Blotting (WB), ELISA, Immunohistochemistry (IHC), Flow Cytometry (FACS)

## Product Details

Immunogen:	A portion of amino acids 177-206 from human IL1A was used as the immunogen for this IL-1 antibody.
Isotype:	Ig Fraction
Purification:	Antigen affinity purified

## Target Details

Target:	IL1A
Alternative Name:	IL1 alpha ( <a href="#">IL1A Products</a> )
Background:	IL1A is produced by activated macrophages and stimulates thymocyte proliferation by inducing IL-2 release, B-cell maturation and proliferation, and fibroblast growth factor activity. IL-1 proteins are involved in the inflammatory response, being identified as endogenous pyrogens,

## Target Details

and are reported to stimulate the release of prostaglandin and collagenase from synovial cells.  
[UniProt]

UniProt: [P01583](#)

Pathways: [NF-kappaB Signaling](#), [Autophagy](#), [Cancer Immune Checkpoints](#)

## Application Details

Application Notes: The stated application concentrations are suggested starting amounts. Titration of the IL-1 antibody may be required due to differences in protocols and secondary/substrate sensitivity.\.  
Western blot: 1:1000,IHC (Paraffin): 1:50-1:100,Flow Cytometry: 1:10-1:50

Restrictions: For Research Use only

## Handling

Format: Liquid

Buffer: In 1X PBS, pH 7.4, with 0.09 % sodium azide

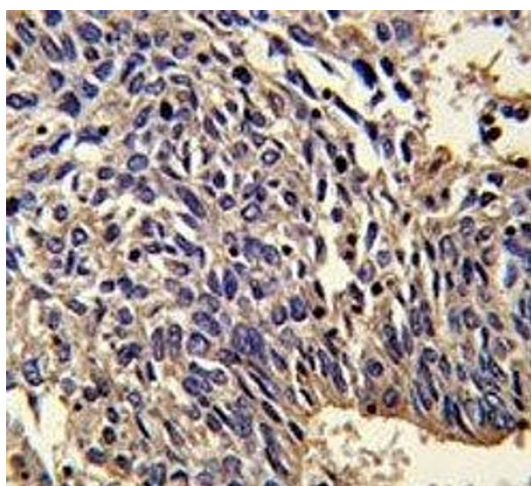
Preservative: Sodium azide

Precaution of Use: This product contains Sodium azide: a POISONOUS AND HAZARDOUS SUBSTANCE which should be handled by trained staff only.

Storage: -20 °C

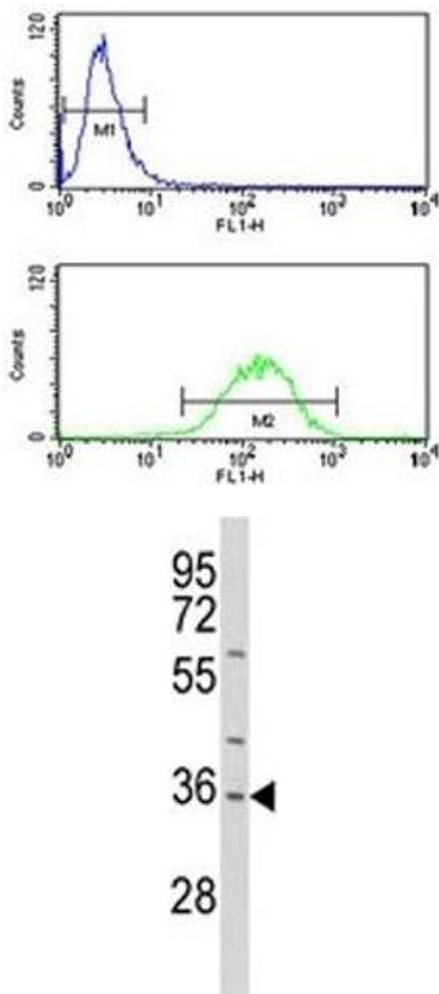
Storage Comment: Store at 4°C for up to one month. For long term, aliquot the IL-1 antibody and store frozen at -20°C or colder. Avoid repeated freeze-thaw cycles.

## Images



### Immunohistochemistry

**Image 1.** IHC analysis of FFPE human lung carcinoma stained with IL-1 antibody



### Flow Cytometry

**Image 2.** IL-1 antibody flow cytometry analysis of NCI-H460 cells (bottom histogram) compared to a negative control (top histogram). FITC-conjugated goat-anti-rabbit secondary Ab was used for the analysis.

### Western Blotting

**Image 3.** Western blot analysis of IL-1 antibody and HepG2 lysate. Predicted molecular weight of IL1A: 31 kDa precursor and 17 kDa mature.

Please check the [product details page](#) for more images. Overall 5 images are available for ABIN3031433.