

Datasheet for ABIN3031441
anti-IL-10 antibody (AA 27-53)[Go to Product page](#)

5 Images

Overview

Quantity:	0.4 mL
Target:	IL-10 (IL10)
Binding Specificity:	AA 27-53
Reactivity:	Human
Host:	Rabbit
Clonality:	Polyclonal
Conjugate:	This IL-10 antibody is un-conjugated
Application:	Western Blotting (WB), Immunohistochemistry (IHC), ELISA, Flow Cytometry (FACS)

Product Details

Immunogen:	A portion of amino acids 27-53 from the human protein was used as the immunogen for this IL-10 antibody.
Isotype:	Ig Fraction
Cross-Reactivity (Details):	Expected species reactivity: Primate
Purification:	Antigen affinity purified

Target Details

Target:	IL-10 (IL10)
Alternative Name:	IL-10 (IL10 Products)
Background:	The protein is a cytokine produced primarily by monocytes and to a lesser extent by

Target Details

lymphocytes. This cytokine has pleiotropic effects in immunoregulation and inflammation. It down-regulates the expression of Th1 cytokines, MHC class II Ags, and costimulatory molecules on macrophages. It also enhances B cell survival, proliferation, and antibody production. This cytokine can block NF-kappa B activity, and is involved in the regulation of the JAK-STAT signaling pathway. Knockout studies in mice suggested the function of this cytokine as an essential immunoregulator in the intestinal tract.

UniProt: [P22301](#)

Pathways: [Cellular Response to Molecule of Bacterial Origin](#), [Regulation of Leukocyte Mediated Immunity](#), [Production of Molecular Mediator of Immune Response](#), [Maintenance of Protein Location](#), [Cancer Immune Checkpoints](#)

Application Details

Application Notes: Titration of the IL-10 antibody may be required due to differences in protocols and secondary/substrate sensitivity.\. Western blot: 1:1000,IHC (Paraffin): 1:10-1:50,Flow Cytometry: 1:10-1:50

Restrictions: For Research Use only

Handling

Format: Liquid

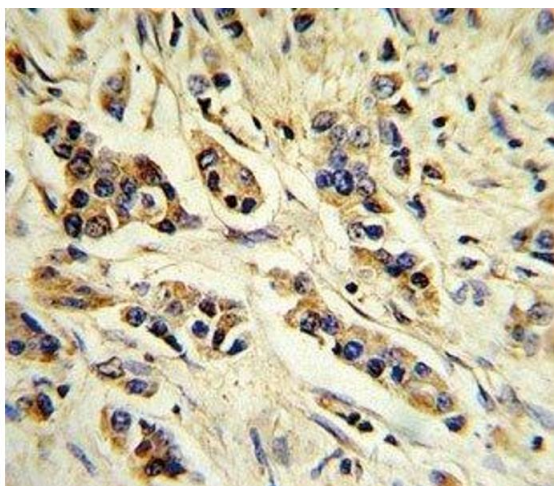
Buffer: In 1X PBS, pH 7.4, with 0.09 % sodium azide

Preservative: Sodium azide

Precaution of Use: This product contains Sodium azide: a POISONOUS AND HAZARDOUS SUBSTANCE which should be handled by trained staff only.

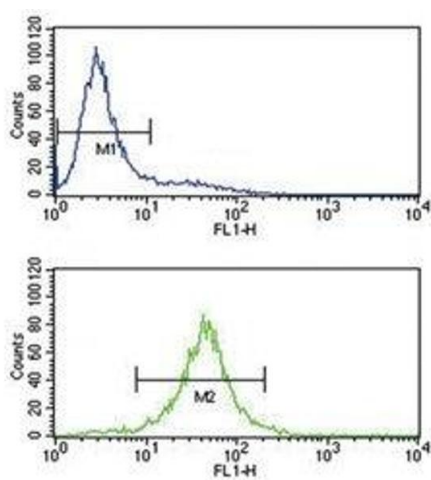
Storage: -20 °C

Storage Comment: Aliquot the IL-10 antibody and store frozen at -20°C or colder. Avoid repeated freeze-thaw cycles.



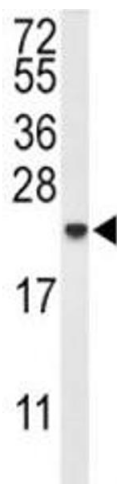
Immunohistochemistry

Image 1. IHC analysis of FFPE human breast carcinoma stained with IL-10 antibody



Flow Cytometry

Image 2. IL-10 antibody flow cytometry analysis of Jurkat cells (bottom histogram) compared to a negative control (top histogram). FITC-conjugated goat-anti-rabbit secondary Ab was used for the analysis.



Western Blotting

Image 3. Western blot analysis of IL-10 antibody and MDA-MB435 lysate. Predicted molecular weight ~20 kDa.

Please check the [product details page](#) for more images. Overall 5 images are available for ABIN3031441.