



[Go to Product page](#)

Datasheet for ABIN3031502
anti-ISG15 antibody (AA 31-61)

6 Images

Overview

Quantity:	0.4 mL
Target:	ISG15
Binding Specificity:	AA 31-61
Reactivity:	Human
Host:	Rabbit
Clonality:	Polyclonal
Conjugate:	This ISG15 antibody is un-conjugated
Application:	Western Blotting (WB), ELISA, Immunohistochemistry (IHC)

Product Details

Immunogen:	A portion of amino acids 31-61 from the human protein was used as the immunogen for this ISG15 antibody.
Isotype:	Ig Fraction
Purification:	Antigen affinity purified

Target Details

Target:	ISG15
Alternative Name:	ISG15 (ISG15 Products)
Background:	ISG15 is secreted from monocytes in response to type I interferons and causes natural killer (NK)-cell proliferation and an augmentation of non-MCH (major histocompatibility complex)-restricted cytotoxicity. Synthesis is stimulated by IFN-alpha or IFN-beta or IFN-omega , but not

Target Details

IFN-gamma . ISG15 expression is also induced by overexpression of interferon regulatory factors that participate in transcriptional regulation of IFN genes, and by influenza B virus. ISG15 is secreted also by cell lines of monocyte, T-lymphocyte, B-lymphocyte, human fibroblasts, and epithelial origins. The induction of terminal differentiation in human melanoma cells is associated with alterations in ISG15 expression. Enhancement of NK cell proliferation, augmentation of non-major histocompatibility complex-restricted cytotoxicity, and induction of IFN-gamma from T cells identify ISG15 as a member of the cytokine cascade and suggest that it may be responsible for amplifying and directing some of the immunomodulatory effects of IFN-alpha or IFN-beta. ISG15 has also been shown to function intracellularly as a ubiquitin homolog.

UniProt: [P05161](#)

Application Details

Application Notes: Titration of the ISG15 antibody may be required due to differences in protocols and secondary/substrate sensitivity.\. IHC (Paraffin): 1:50-1:100,Western blot: 1:1000

Restrictions: For Research Use only

Handling

Format: Liquid

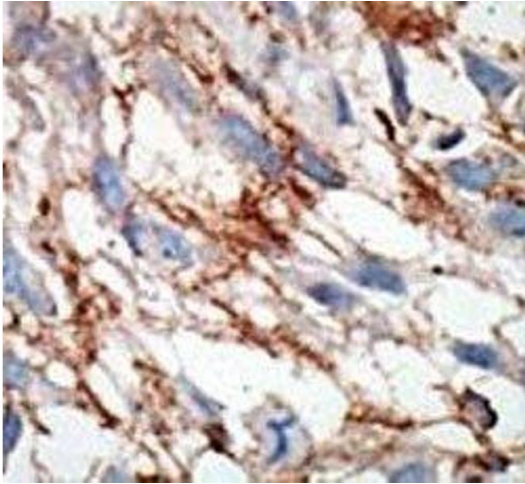
Buffer: In 1X PBS pH 7.4 with 0.09 % sodium azide

Preservative: Sodium azide

Precaution of Use: This product contains Sodium azide: a POISONOUS AND HAZARDOUS SUBSTANCE which should be handled by trained staff only.

Storage: -20 °C

Storage Comment: Aliquot the ISG15 antibody and store frozen at -20°C or colder. Avoid repeated freeze-thaw cycles.



Immunohistochemistry

Image 1. IHC analysis of FFPE human breast carcinoma tissue stained with the ISG15 antibody



Western Blotting

Image 2. ISG15 antibody western blot analysis in 293 lysate



Western Blotting

Image 3. Western blot analysis of ISG15 antibody and 293 cell lysate (2 ug/lane) either nontransfected (Lane 1) or transiently transfected with the ISG15 gene (2).

Please check the [product details page](#) for more images. Overall 6 images are available for ABIN3031502.