

Datasheet for ABIN3031503  
**anti-ISG15 antibody (AA 136-165)**



[Go to Product page](#)

3 Images

## Overview

Quantity:	0.4 mL
Target:	ISG15
Binding Specificity:	AA 136-165
Reactivity:	Human
Host:	Rabbit
Clonality:	Polyclonal
Conjugate:	This ISG15 antibody is un-conjugated
Application:	Western Blotting (WB), ELISA

## Product Details

Immunogen:	A portion of amino acids 136-165 from the human protein was used as the immunogen for this ISG15 antibody.
Isotype:	Ig Fraction
Purification:	Purified

## Target Details

Target:	ISG15
Alternative Name:	ISG15 ( <a href="#">ISG15 Products</a> )
Background:	ISG15 is secreted from monocytes in response to type I interferons and causes natural killer (NK)-cell proliferation and an augmentation of non-MCH (major histocompatibility complex)-restricted cytotoxicity. Synthesis is stimulated by IFN-alpha or IFN-beta or IFN-omega , but not

Target Details

IFN-gamma . ISG15 expression is also induced by overexpression of interferon regulatory factors that participate in transcriptional regulation of IFN genes, and by influenza B virus. ISG15 is secreted also by cell lines of monocyte, T-lymphocyte, B-lymphocyte, human fibroblasts, and epithelial origins. The induction of terminal differentiation in human melanoma cells is associated with alterations in ISG15 expression. Enhancement of NK cell proliferation, augmentation of non-major histocompatibility complex-restricted cytotoxicity, and induction of IFN-gamma from T cells identify ISG15 as a member of the cytokine cascade and suggest that it may be responsible for amplifying and directing some of the immunomodulatory effects of IFN-alpha or IFN-beta. ISG15 has also been shown to function intracellularly as a ubiquitin homolog.

UniProt: [P05161](#)

Application Details

Application Notes: Titration of the ISG15 antibody may be required due to differences in protocols and secondary/substrate sensitivity.\. Western blot: 1:1000

Restrictions: For Research Use only

Handling

Format: Liquid

Buffer: In 1X PBS pH 7.4 with 0.09 % sodium azide

Preservative: Sodium azide

Precaution of Use: This product contains Sodium azide: a POISONOUS AND HAZARDOUS SUBSTANCE which should be handled by trained staff only.

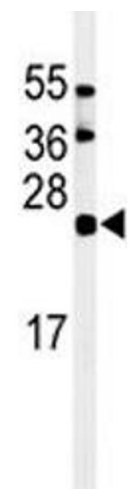
Storage: -20 °C

Storage Comment: Aliquot the ISG15 antibody and store frozen at -20°C or colder. Avoid repeated freeze-thaw cycles.



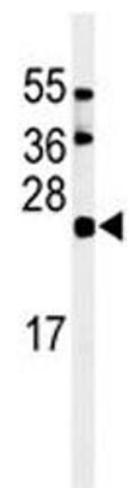
Western Blotting

**Image 1.** Western blot analysis of ISG15 antibody and 293 cell lysate (2 ug/lane) either nontransfected (Lane 1) or transiently transfected (2) with the ISG15 gene.



Western Blotting

**Image 2.** Western blot analysis of ISG15 antibody and HL-60 lysate



Western Blotting

**Image 3.** Western blot analysis of ISG15 antibody and HL-60 lysate